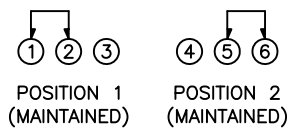


**SCHEMATIC**



**COLORS**

**BODY:**  
Metallic  
**ACTUATOR:**  
Black

**SPECIFICATIONS**

**FUNCTION:**  
1P2T ON-ON  
Non-Shorting

**RATINGS:**  
11A 125VAC  
5.5A 250VAC

**CONTACT RESISTANCE:**  
Initial: 30mΩ Max. at 50VDC

**INSULATION RESISTANCE:**  
500MΩ Min. at 500VDC

**DIELECTRIC STRENGTH:**  
1,000VAC For 1 Minute

**MECHANICAL LIFE:**  
100,000 Cycles

**ELECTRICAL LIFE:**  
10,000 Cycles

**TEMPERATURE:**  
-30° to 105°C

**APPROVALS:**



**MATERIALS**

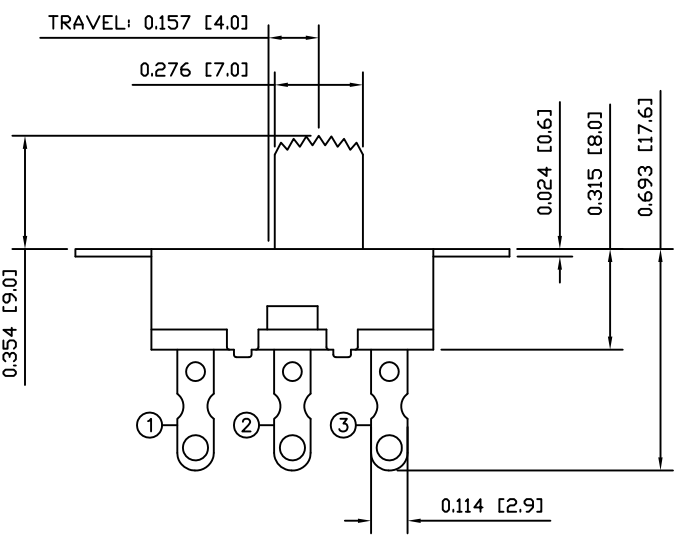
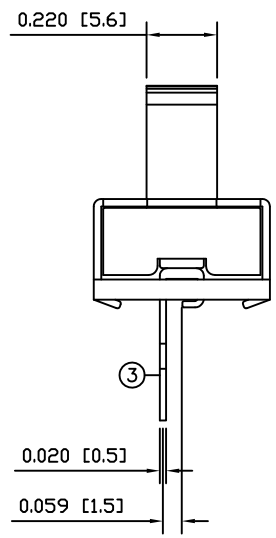
**UPPER BODY:**  
Steel

**BASE:**  
Penolic Board, UL94 V-0

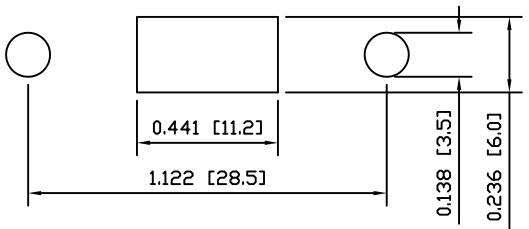
**ACTUATOR:**  
Polyphenylene Oxide

**CONTACTS**  
Silver

**TERMINALS:**  
Silver Plated Copper



**SUGGESTED PANEL CUTOUT**



UNLESS OTHERWISE SPECIFIED, DIMENSIONS ARE IN INCHES [MILLIMETERS] TOLERANCES ARE:	
DEC .X±0.2	ANG ± 1°
.XXX±0.008	DRAWING NOT TO SCALE
DRAWN BY: STACEY CHRISTIANSON	

	P.O. Box 25110 Portland, OR 97298	LAST REVISION: OCT. 1, 2008
	DRAWING NUMBER: 03-LSU11-120002A9.dwg	
<b>LSU11-120002A9</b>		