

**COLORS**  
 BODY: Metallic  
 ACTUATOR: Black

**SPECIFICATIONS**

FUNCTION:  
 2P2T ON-ON  
 Non-Shorting

RATINGS:  
 11A 125VAC  
 5.5A 250VAC

CONTACT RESISTANCE:  
 Initial: 30mΩ Max. at 50VDC

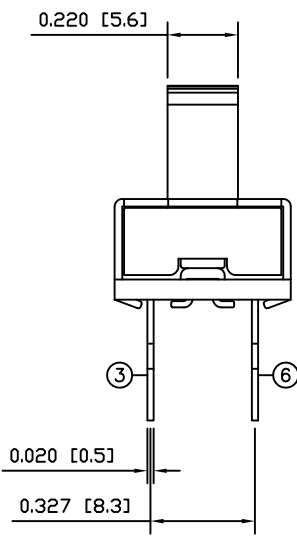
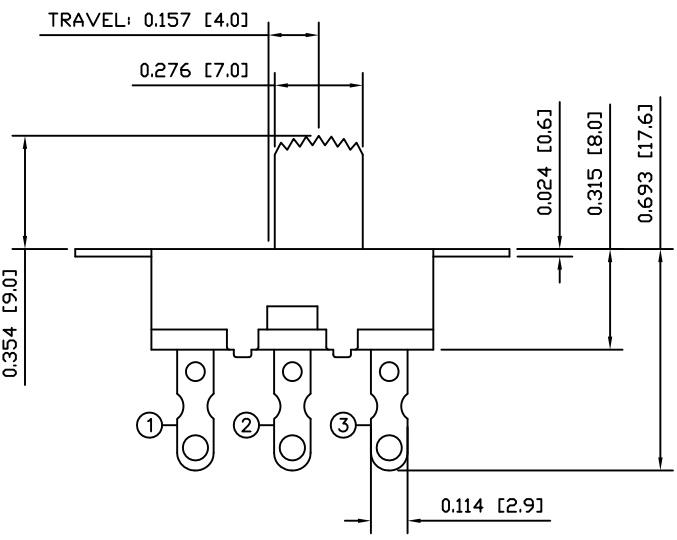
INSULATION RESISTANCE:  
 500MΩ Min. at 500VDC

DIELECTRIC STRENGTH:  
 1,000VAC For 1 Minute

MECHANICAL LIFE:  
 100,000 Cycles

ELECTRICAL LIFE:  
 10,000 Cycles

TEMPERATURE:  
 -30° to 105°C



**MATERIALS**

UPPER BODY:  
 Steel

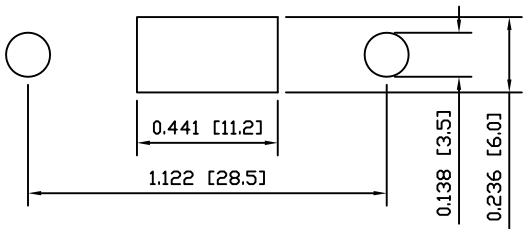
BASE:  
 Phenolic Board, UL94 V-0

ACTUATOR:  
 Polyphenylene Oxide

CONTACTS  
 Silver

TERMINALS:  
 Silver Plated Copper

**SUGGESTED PANEL CUTOUT**



UNLESS OTHERWISE SPECIFIED, DIMENSIONS ARE IN INCHES [MILLIMETERS] TOLERANCES ARE:		P.O. Box 25110 Portland, OR 97298 LAST REVISION: OCT. 1, 2008
DEC .X±0.2	ANG ± 1°	
.XXX±0.008	DRAWING NOT TO SCALE	DRAWING NUMBER: 03-LSU11-220002A9.dwg
DRAWN BY: STACEY CHRISTIANSON		LSU11-220002A9