

SCHMATIC

POSITION	1	2	4	8
0	●	●	●	●
1	●	●	●	●
2	●	●	●	●
3	●	●	●	●
4	●	●	●	●
5	●	●	●	●
6	●	●	●	●
7	●	●	●	●
8	●	●	●	●
9	●	●	●	●

● CLOSED (connected to 0)

SPECIFICATIONS

FUNCTION: 10 Positions
 1 Pole, 10 Positions

RATINGS:
 Switching: 100mA 50DC
 Steady: 100mA 500DC

OPERATING TORQUE:
 300gf cm Max.

CONTACT RESISTANCE:
 Initial: 100mΩ Max.

INSULATION RESISTANCE:
 105MΩ Min. @ 250VDC

DIELECTRIC STRENGTH:
 2500VAC for 1 Minute

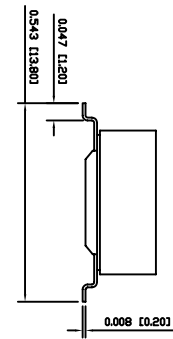
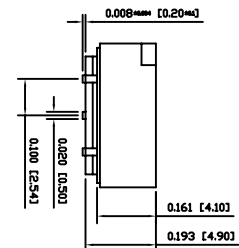
ELECTRICAL LIFE:
 10,000 Steps

SHOCK RESISTANCE:
 Min-Stk 202F, Method 213B, Condition A
 Gravity: 50G
 Direction: 2 Sides
 Thrust: 3 Each Direction

VIBRATION RESISTANCE:
 Min-Stk 202F, Method 224C, Condition B
 Amplitude: 10, 100, 500, 1000, 5000, 10000
 Amplitude: 1.52mm
 Direction: X, Y, Z
 Time: 2 Hours Each Direction

TEMPERATURE:
 Operating: -10°C to 60°C
 Storage: -55°C to 85°C

APPROVALS:



PACKAGING

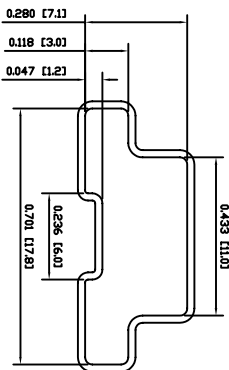
TUBE LENGTH:
 25.0 [500]
 TUBE QUANTITY:
 47 Pieces

COLORS

Body: Black
 Actuator: Orange

MATERIALS

BASE: Polyphenylene Sulfide (PPS)
 COVER: Polyphenylene Sulfide (PPS)
 ACTUATOR: Polyamide
 SPRING PLATE: Stainless Steel
 CONTACT DISC: Glass Fabric Epoxy Resin
 Gold Over Nickel Plating
 TERMINALS: Gold Over Nickel Plated Phosphor Bronze



8	7	6	5	4	3	2	1
---	---	---	---	---	---	---	---

UNLESS OTHERWISE SPECIFIED,
 DIMENSIONS ARE IN INCHES [MILLIMETERS]
 TOLERANCES ARE:
 DEC .XX4 0.008 ANG ± 1°
 .XXX4 0.008 DRAWING NOT TO SCALE
 DRAWN BY: CARL BUCHHEIT

P.O. Box 28110
 INDUSTRIES Portland, OR 97288
 DRAWING NUMBER: 04-SRM-10.dwg
 LAST REVISION:
 AUG. 7, 2006
 SRM-10