

SCHMATIC

POSITION	1	2	4	8
0	•	•	•	•
1	•	•	•	•
2	•	•	•	•
3	•	•	•	•
4	•	•	•	•
5	•	•	•	•
6	•	•	•	•
7	•	•	•	•
8	•	•	•	•
9	•	•	•	•
A	•	•	•	•
B	•	•	•	•
C	•	•	•	•
D	•	•	•	•
E	•	•	•	•
F	•	•	•	•
G	•	•	•	•
H	•	•	•	•

• CLOSED (connected to 0)

SPECIFICATIONS

FUNCTION: 16 Positions  
 1 Pole, 16 Positions

RATINGS:  
 Switching: 100mA 50VDC  
 Steady: 100mA 50VDC

OPERATING TORQUE:  
 300gf cm Max.

CONTACT RESISTANCE:  
 Initial: 100mΩ Max.

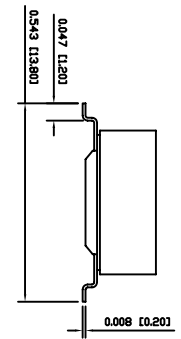
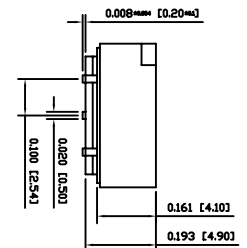
INSULATION RESISTANCE:  
 105MΩ Min. @ 250VDC

DIELECTRIC STRENGTH:  
 250VAC for 1 Minute

ELECTRICAL LIFE:  
 10,000 Steps

SHOCK RESISTANCE:  
 Mil-Std. 202F, Method 213B, Condition A

Gravity: 50G  
 Direction: 5 Sides  
 Thrust: 3 Each Direction



PACKAGING

TUBE LENGTH:  
 25.0 [635]

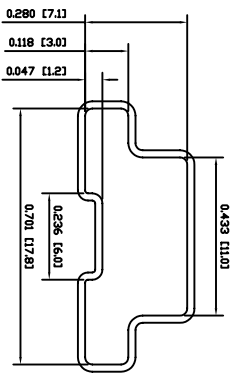
TUBE QUANTITY:  
 47 Pieces

COLORS

Body: Black  
 Actuator: Orange

MATERIALS

BASE: Polyphenylene Sulfide (PPS)  
 COVER: Polyphenylene Sulfide (PPS)  
 ACTUATOR: Polyamide  
 SPRING PLATE: Stainless Steel  
 CONTACT DISC: Glass Fabric Epoxy Resin  
 Gold Over Nickel Plating  
 TERMINALS: Gold Over Nickel Plated Phosphor Bronze



UNLESS OTHERWISE SPECIFIED, DIMENSIONS ARE IN INCHES [MILLIMETERS] TOLERANCES ARE:

DEC .XX4.0.008	ANG ± 1°
DRAWING NOT TO SCALE	

DRAWN BY: CARL BUCHHEIT

AMBI INDUSTRIES P.O. Box 23110 Portland, OR 97238

LAST REVISION: AUG. 7, 2006

DRAWING NUMBER: 04-SRM-16.dwg

SRM-16