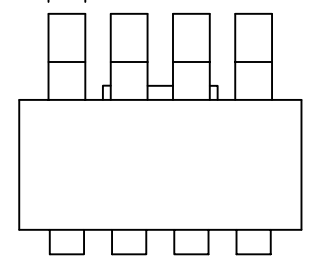


8 7 6 5 4 3 2 1

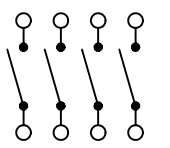
A

A

0.059 [1.50]



SCHEMATIC



COLORS

BODY:  
Red

ACTUATOR:  
White

MARKING COLOR:  
White

SPECIFICATIONS

FUNCTION:  
4x1P1T OFF-ON

RATINGS:  
Switching: 25mA 24VDC  
Steady: 100mA 50VDC

ELECTRICAL LIFE:  
2,000 Operations Per Switch

CONTACT RESISTANCE:  
Max. 50mΩ Initial

INSULATION RESISTANCE:  
100MΩ at 500VDC

WITHSTAND VOLTAGE:  
500VAC For 1 Minute

CAPACITANCE:  
5pF Max.

SHOCK RESISTANCE:  
Mil-Std. 202F, Method 213B  
Gravity: 50G, 11msec.  
Direction: 6 sides  
Times: 3 Each Direction  
High Reliability

VIBRATION RESISTANCE:  
Mil-Std. 202F, Method 201A  
Frequency: 10-55-10Hz/1  
Minute  
Direction: X, Y, Z  
Time: 2 Hours Each Direction  
High Reliability

B

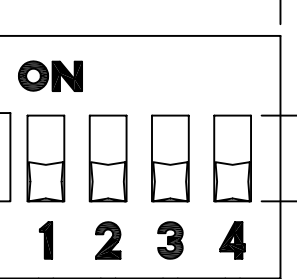
B

0.055 [1.40]

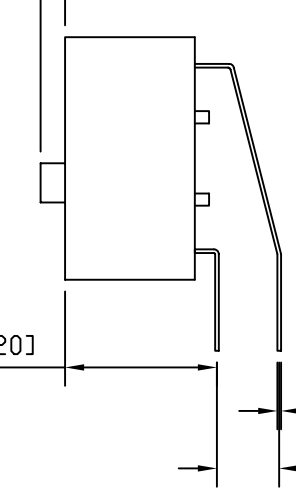
0.454 [11.52]

0.138 [3.50]

0.114 [2.90]  
0.390 [9.90]



0.039 [1.00]



C

C

0.020 [0.50]

0.100 [2.54]

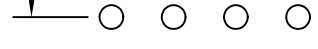
0.244 [6.20]

0.006 [0.15]

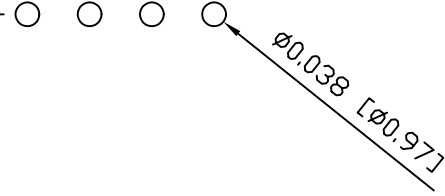
0.100 [2.54]

SUGGESTED PCB LAYOUT

0.100 [2.54]



0.100 [2.54]



MATERIALS

BASE:  
Polybutylene Terephthalate, UL94V-0

COVER:  
Polybutylene Terephthalate, UL94V-0

ACTUATOR:  
Polybutylene Terephthalate, UL94V-0

TERMINALS:  
Gold over Nickel Plated Phosphor  
Bronze.

POTTING:  
Epoxy

OPERATING FORCE:  
1000gf

TEMPERATURE:  
Operating: -20°C to 70°C  
Storage: -40°C to 85°C

PACKAGING:  
40 Pieces per Tube

D

D

**LAMB INDUSTRIES** P.O. Box 25110  
Portland, OR 97298

LAST REVISION:  
APR. 06, 2004

UNLESS OTHERWISE SPECIFIED,  
DIMENSIONS ARE IN INCHES [MILLIMETERS]  
TOLERANCES ARE:  
DEC .X±0.2 ANG ± 1°  
.XXX±0.008 DRAWING NOT TO SCALE

DRAWING NUMBER: 06-LDA-04-R-B.dwg

LDA-04-R-B

8 7 6 5 4 3 2 1