

8

7

6

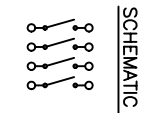
5

4

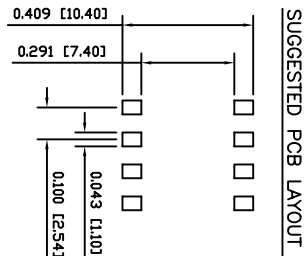
3

2

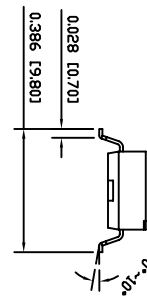
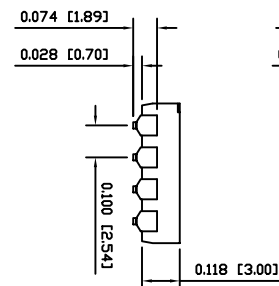
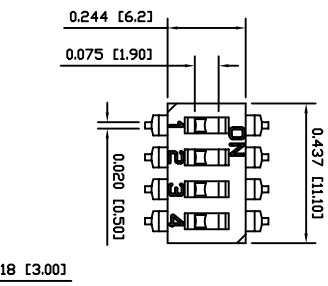
1



SCHEMATIC



SUGGESTED PCB LAYOUT



SPECIFICATIONS

FUNCTION: 4x1P1T OFF-ON

RATINGS:
Switching: 25mA 24VDC
Steady: 100mA 50VDC

ELECTRICAL LIFE:
2,000 Operations Per Switch Min.

CONTACT RESISTANCE:
Initial: 50mΩ Max.
After Life: 100mΩ Max.

INSULATION RESISTANCE:
100MΩ Min. at 500VDC

WITHSTAND VOLTAGE:
500VAC For 1 Minute

CAPACITANCE:
SpF Max.

SHOCK RESISTANCE:
Min-Std. 202F, Method 213B
Gravity: 50G, 11msec.
Direction: 9 sides
Times: 3 Each Direction
High Reliability

VIBRATION RESISTANCE:
Min-Std. 202F, Method 201A
Frequency: 10-55-10Hz/1 Minute
Direction: X, Y, Z
Time: 2 Hours Each Direction
High Reliability

OPERATING FORCE:
1000gf

TEMPERATURE:
Operating: -20°C to 85°C
Storage: -40°C to 85°C

APPROVALS:



MATERIALS

BASE:
Polyphenylene Sulfide (PPS), UL94 V-0

ACTUATOR:
Liquid Crystal Polymer (LCP), UL94 V-0

CONTACTS:
Gold Over Nickel Plated Beryllium Copper

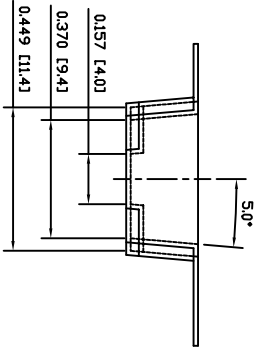
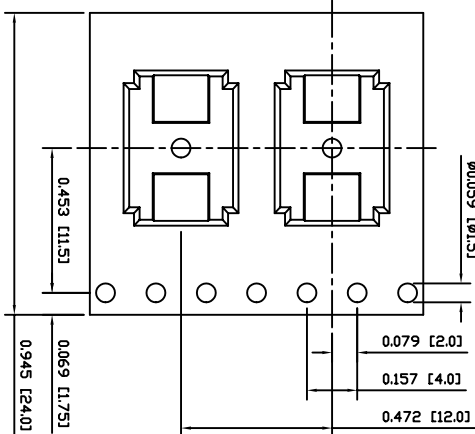
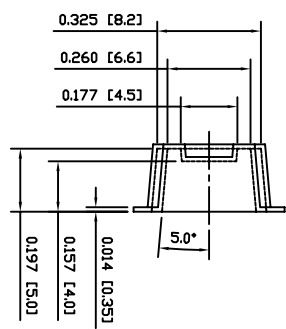
TERMINALS:
Gold Plated Brass

Sealing Tape:
Kapton

REEL DIAMETER:
13.0 [330]

SPINDLE DIAMETER:
0.512 [13.0]

REEL QUANTITY:
1000 Pieces



AMBI INDUSTRIES
P.O. Box 28110
Portland, OR 97298

LAST REVISION:
APR. 27, 2006

DRAWING NUMBER: 06-LDMR-04-T-TR.dwg

LDMR-04-T-TR

UNLESS OTHERWISE SPECIFIED,
DIMENSIONS ARE IN INCHES [MILLIMETERS]
TOLERANCES ARE:

DEC .X4 0.2	ANG ± 1°
XXXX 0.008	DRAWING NOT TO SCALE

DRAWN BY: CARL BUCHHEIT

8

7

6

5

4

3

2

1