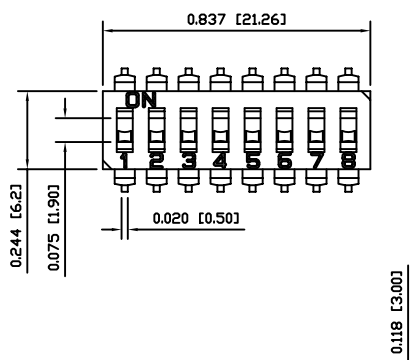
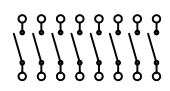


8 7 6 5 4 3 2 1

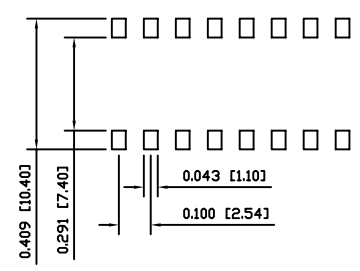
A



SCHMATIC



SUGGESTED PCB LAYOUT



SPECIFICATIONS

FUNCTION:
8x1P1T OFF-ON

RATINGS:
Switching: 25mA 24VDC
Steady: 100mA 50VDC

ELECTRICAL LIFE:
2,000 Operations Per Switch Min.

CONTACT RESISTANCE:
Initial: 50mΩ Max.
After Life: 100mΩ Max.

INSULATION RESISTANCE:
100MΩ Min. at 500VDC

WITHSTAND VOLTAGE:
500VAC For 1 Minute

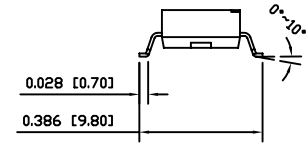
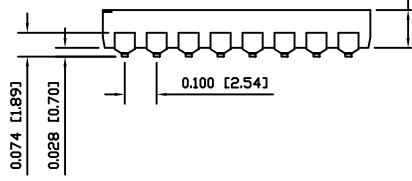
CAPACITANCE:
5pF Max.

SHOCK RESISTANCE:
Mil-Std. 202F, Method 213B
Gravity: 50G, 11msec.
Direction: 6 sides
Times: 3 Each Direction
High Reliability

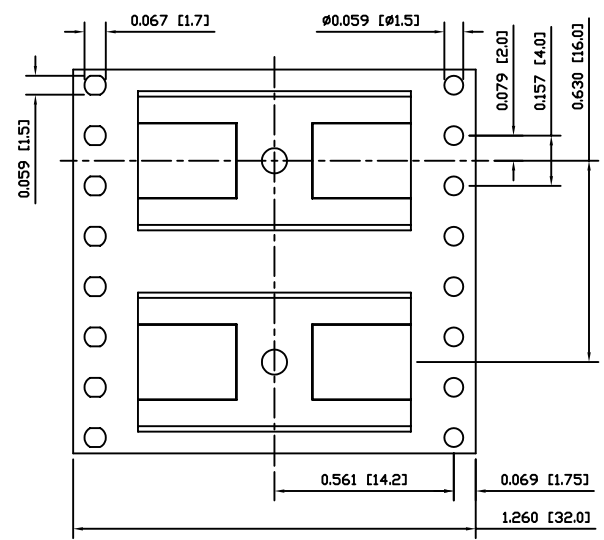
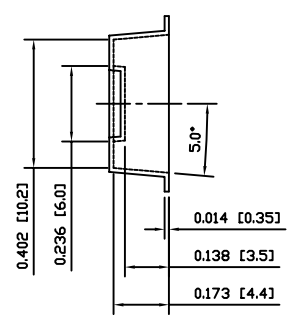
VIBRATION RESISTANCE:
Mil-Std. 202F, Method 201A
Frequency: 10-55-10Hz/1 Minute
Direction: X, Y, Z
Time: 2 Hours Each Direction
High Reliability

A

B



PACKAGING DIMENSIONS



REEL DIAMETER:
13.0 [330]

SPINDLE DIAMETER:
0.512 [13.0]

REEL QUANTITY:
900 Pieces

OPERATING FORCE:
1000gf

TEMPERATURE:
Operating: -20°C to 85°C
Storage: -40°C to 85°C



MATERIALS

BASE:
Polyphenylene Sulfide (PPS), UL94 V-0

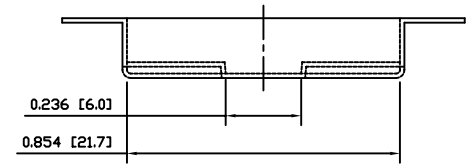
ACTUATOR:
Polyamide 4/6 (PA46), UL94 V-0

CONTACTS:
Gold Over Nickel Plated Beryllium Copper

TERMINALS:
Gold Plated Brass

Sealing Tape:
Kapton

D



UNLESS OTHERWISE SPECIFIED,
DIMENSIONS ARE IN INCHES [MILLIMETERS]
TOLERANCES ARE:

| | |
|-------------------------|----------------------|
| DEC .X±0.2 | ANG ± 1° |
| .XXX±0.008 | DRAWING NOT TO SCALE |
| DRAWN BY: CARL BUCHHEIT | |

| | | |
|-----------------------|--------------------------------------|---------------------------------|
| | P.O. Box 25110 Portland, OR 97298 | LAST REVISION: APR. 27, 2006 |
| | DRAWING NUMBER: 06-LDMR-08-T-TR.dwg | |
| <h1>LDMR-08-T-TR</h1> | | |

B

C

D

8 7 6 5 4 3 2 1