

SPECIFICATIONS

FUNCTION:
1P2T ON-(ON)

RATINGS:
500mA 30VDC

OPERATING FORCE:
50gf Max.

CONTACT RESISTANCE:
Initial: 100mΩ Max.

INSULATION RESISTANCE:
100MΩ Min. at 250VDC

DIELECTRIC STRENGTH:
500VAC for 1 Min.

ELECTRICAL LIFE:
100,000 Cycles

TEMPERATURE:
Operating: -15°C to 70°C

APPROVALS:



MATERIALS

BODY:
Polybutylene Terephthalate (PBT), UL94 HB

BODY COVER:
Polyoxymethylene (POM), UL94 HB

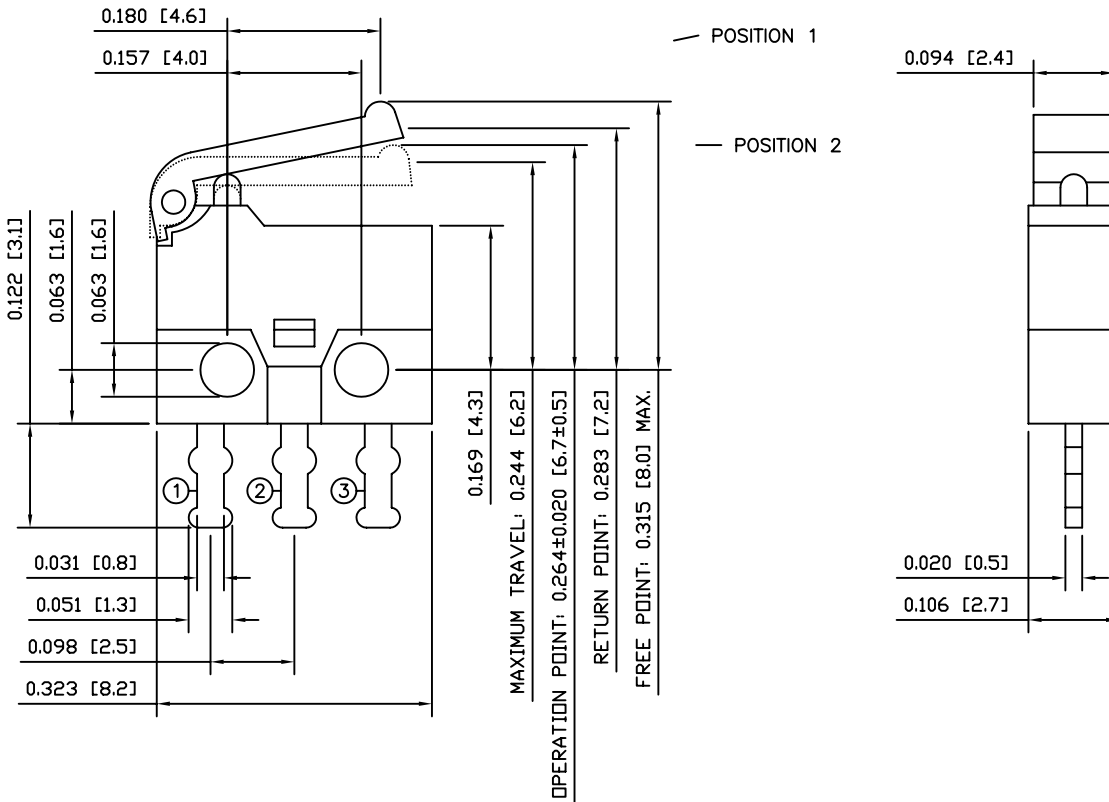
ACTUATOR:
Polyoxymethylene (POM), UL94 HB

LEVER:
Polybutylene Terephthalate (PBT), UL94 HB

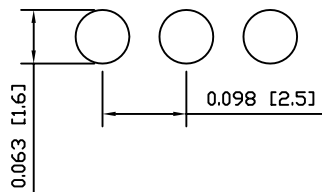
CONTACTS:
Silver

SPRING:
Beryllium Copper

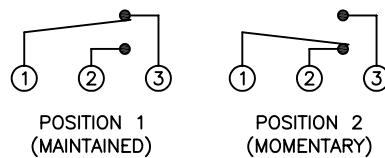
TERMINALS:
Silver Plated Brass



SUGGESTED PCB LAYOUT



SCHEMATIC



COLORS

BODY:
Black

BODY COVER:
Black

LEVER:
Black

UNLESS OTHERWISE SPECIFIED,
DIMENSIONS ARE IN INCHES [MILLIMETERS]
TOLERANCES ARE:

±0.008 [±0.2]	ANG ± 1°
DRAWING NOT TO SCALE	
DRAWN BY: CARL BUCHHEIT	

LAMB INDUSTRIES P.O. Box 25110
Portland, OR 97298

REVISION: A
APR. 30, 2008

DRAWING NUMBER: 14-SSM-001.dwg

SSM-001