

SPECIFICATIONS

FUNCTION:
1P2T ON-ON

RATINGS:
5A 125VAC
2A 250VAC
5A 28VDC

CONTACT RESISTANCE:
10mΩ Max. at 2-4VDC

INSULATION RESISTANCE:
1,000MΩ Min.

DIELECTRIC STRENGTH:
1,500VAC at Sea Level

ELECTRICAL LIFE:
50,000 Cycles at Full Load

OPERATING TEMPERATURE:
-30°C to 85°C

MATERIALS

BODY:
Dially Phthalate (DAP), UL 94V-0

BODY COVER:
Stainless Steel

ACTUATOR:
Stainless Steel

CONTACTS:
Silver Plated Coin Silver

ELECTRICAL TERMINALS:
Silver Plated Copper Alloy

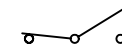
COLORS

BODY:
Red

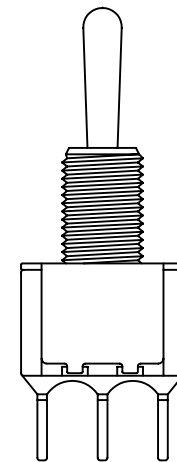
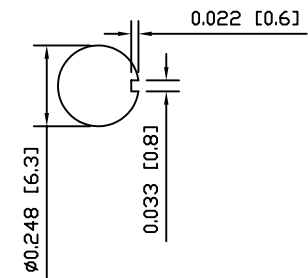
BODY COVER:
Metallic

ACTUATOR:
Metallic

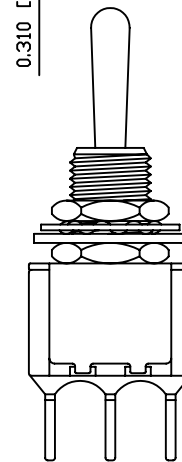
SCHEMATIC



SUGGESTED PANEL CUTOUT



EXPLODED VIEW



ASSEMBLED VIEW



P.O. Box 25110
Portland, OR 97298

LAST REVISION:
DEC. 13, 2004

UNLESS OTHERWISE SPECIFIED, DIMENSIONS ARE IN INCHES [MILLIMETERS]	
TOLERANCES ARE:	
DEC .X±0.2	ANG ± 1°
.XXX±0.008	DRAWING NOT TO SCALE

DRAWING NUMBER: 17-5101-SYCQE.dwg

5101-SYCQE