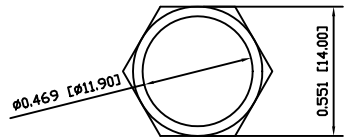
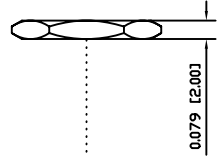
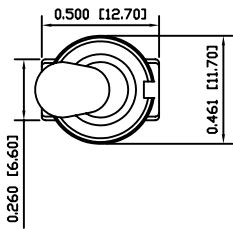


8 7 6 5 4 3 2 1

A



SPECIFICATIONS

FUNCTION:
1P2T ON-ON

RATINGS:
5A 125 VAC
2A 250 VAC
5A 28 VDC

CONTACT RESISTANCE:
10mΩ Max. at 2-4VDC

INSULATION RESISTANCE:
1,000MΩ Min.

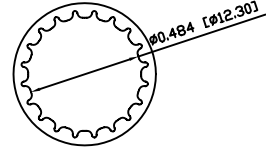
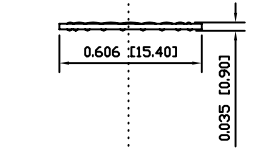
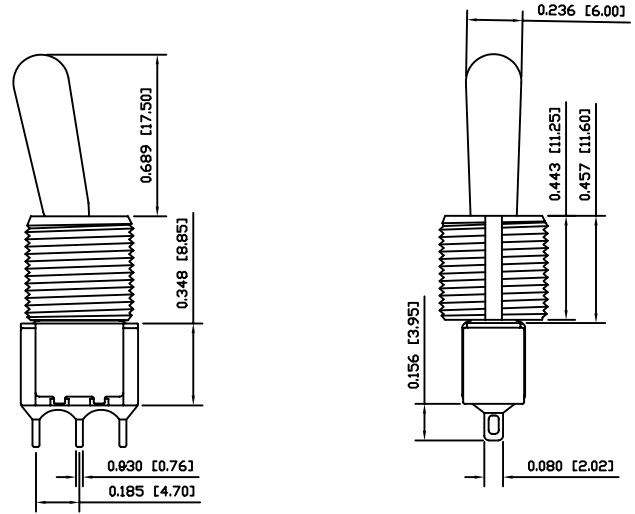
DIELECTRIC STRENGTH:
1,500VAC for 1 Minute

ELECTRICAL LIFE:
50,000 Cycles at Full Load

OPERATING TEMPERATURE:
-30°C to 85°C

A

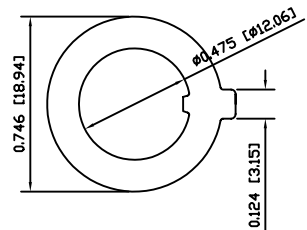
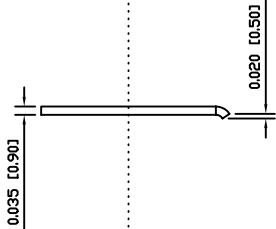
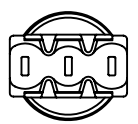
B



APPROVALS:

B

C



MATERIALS

BODY:
Diallyl Phthalate (DAP), UL 94V-0

BODY COVER:
Stainless Steel

ACTUATOR:
Chrome Plated Brass

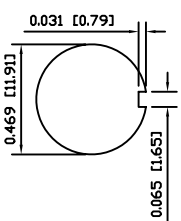
CONTACTS:
Silver Plated Copper

ELECTRICAL TERMINALS:
Silver Plated Copper

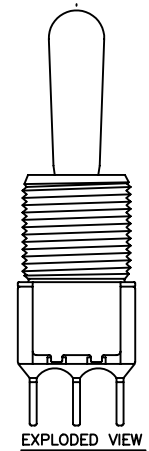
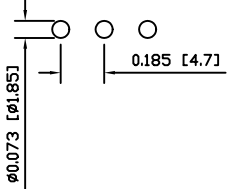
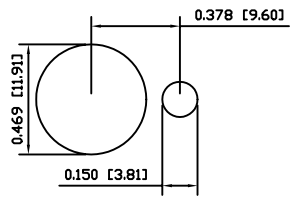
C

D

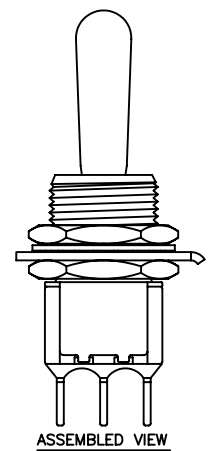
SUGGESTED PANEL CUTOUTS



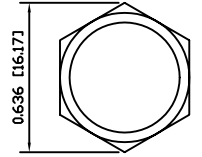
SUGGESTED PCB LAYOUT



EXPLODED VIEW



ASSEMBLED VIEW



COLORS **SCHEMATIC**

BODY:
Red

BODY COVER:
Metallic

ACTUATOR:
Metallic

D

LAMB INDUSTRIES P.O. Box 25110 Portland, OR 97298 **LAST REVISION:**
JULY 15, 2004

UNLESS OTHERWISE SPECIFIED,
DIMENSIONS ARE IN INCHES [MILLIMETERS]
TOLERANCES ARE:
DEC .X±0.2 ANG ± 1°
.XXX±0.008 DRAWING NOT TO SCALE

DRAWING NUMBER: 17-5101-TZQE

5101-TZQE

8 7 6 5 4 3 2 1