

SPECIFICATIONS

FUNCTION:
1P2T ON-OFF-ON

RATINGS:
5A 125VAC
2A 250VAC
5A 28VDC

CONTACT RESISTANCE:
Initial: 10mΩ Max. at 100mA 4VDC

INSULATION RESISTANCE:
1,000MΩ Min.

DIELECTRIC STRENGTH:
1,500VAC for 1 Minute

ELECTRICAL LIFE:
50,000 Cycles Min.

TEMPERATURE:
Operating: -30°C to 85°C

APPROVALS:



MATERIALS

BODY:
Dially Phthalate (DAP), UL94 V-0

BUSHING:
Nickel Plated Brass

BODY COVER:
Stainless Steel

ACTUATOR:
Chrome Plated Brass

CONTACTS:
Silver Plated Copper

TERMINALS:
Silver Plated Copper

TERMINAL SEALING:
Epoxy

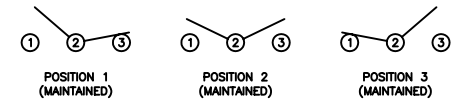
COLORS

BODY:
Red

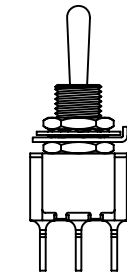
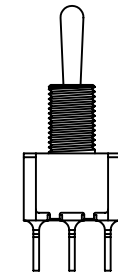
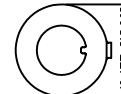
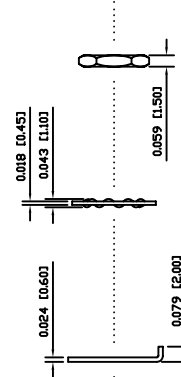
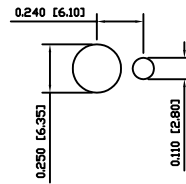
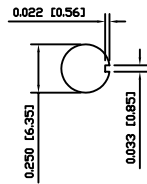
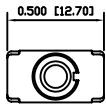
ACTUATOR:
Chrome

BUSHING:
Metallic

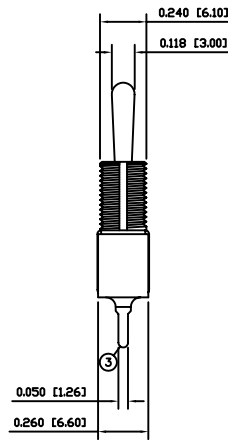
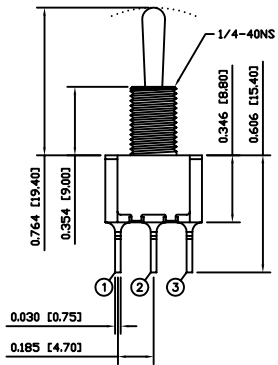
SCHEMATIC



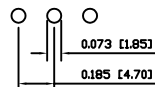
SUGGESTED PANEL CUTOUT **ALTERNATE PANEL CUTOUT**



POSITION 1 POSITION 2 POSITION 3



SUGGESTED PCB LAYOUT



UNLESS OTHERWISE SPECIFIED,
DIMENSIONS ARE IN INCHES [MILLIMETERS]
TOLERANCES ARE:

| | |
|-------------------------|----------------------|
| DEC .X±0.2 | ANG ± 1° |
| .XXX±0.008 | DRAWING NOT TO SCALE |
| DRAWN BY: CARL BUCHHEIT | |

LAMB INDUSTRIES P.O. Box 25110
Portland, OR 97298

LAST REVISION:
FEB. 16, 2007

DRAWING NUMBER: 17-5103-SYCQE.dwg

5103-SYCQE