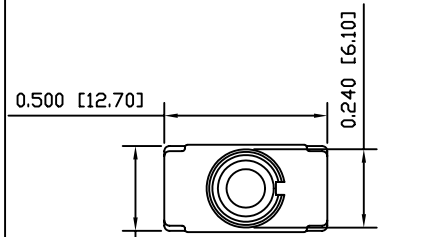
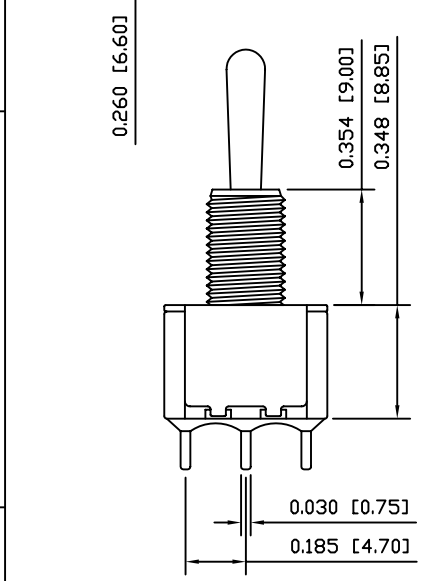


8 7 6 5 4 3 2 1

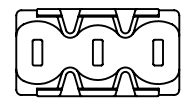
A



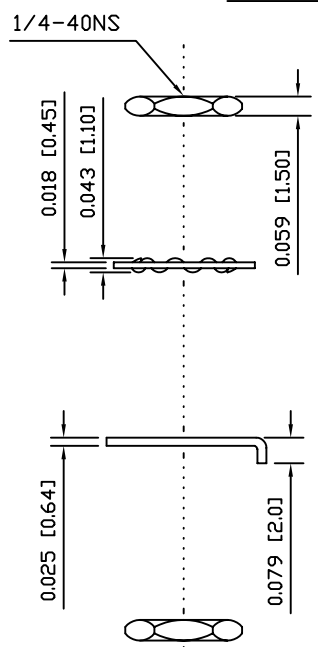
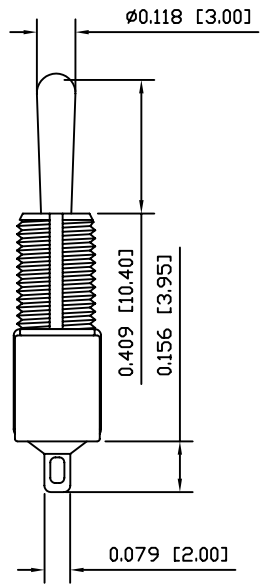
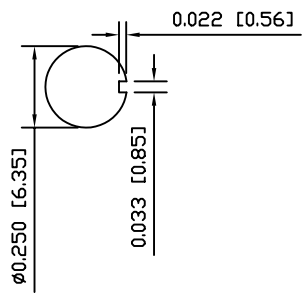
B



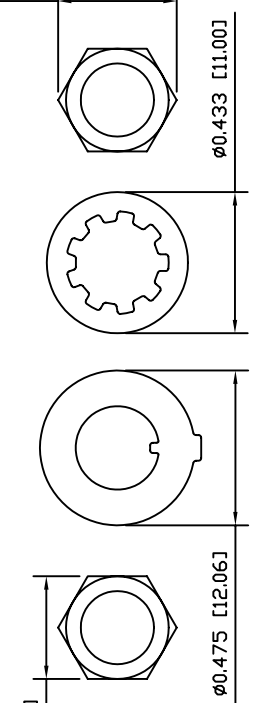
C



SUGGESTED PANEL CUTOUT(S)



EXPLODED VIEW



ASSEMBLED VIEW

SPECIFICATIONS

- FUNCTION:
1P2T ON-OFF-(ON)
- RATINGS:
5A 125 VAC
2A 250 VAC
5A 28 VDC
- CONTACT RESISTANCE:
10mΩ Max. at 2-4VDC
- INSULATION RESISTANCE:
1,000MΩ Min.
- DIELECTRIC STRENGTH:
1,500VAC for 1 Minute
- ELECTRICAL LIFE:
50,000 Cycles at Full Load
- OPERATING TEMPERATURE:
-30°C to 85°C
- APPROVALS:



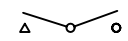
MATERIALS

- BODY:
Dially Phthalate (DAP), UL 94V-0
- BODY COVER:
Stainless Steel
- ACTUATOR:
Chrome Plated Brass
- CONTACTS:
Silver Plated Copper
- ELECTRICAL TERMINALS:
Silver Plated Copper

COLORS

- BODY:
Red
- BODY COVER:
Metallic
- ACTUATOR:
Metallic

SCHEMATIC



D

D

LAMB INDUSTRIES P.O. Box 25110 Portland, OR 97298

LAST REVISION: JULY 21, 2003

UNLESS OTHERWISE SPECIFIED, DIMENSIONS ARE IN INCHES [MILLIMETERS]	
TOLERANCES ARE:	
DEC .X±0.2	ANG ± 1°
.XXX±0.008	DRAWING NOT TO SCALE

DRAWING NUMBER: 17-5107-SYZQE.dwg

5107-SYZQE

8 7 6 5 4 3 2 1