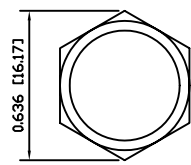
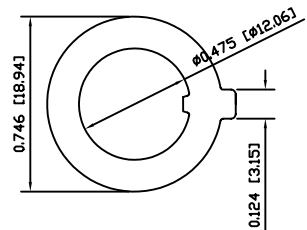
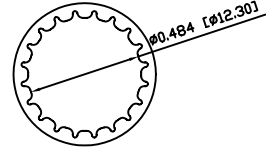
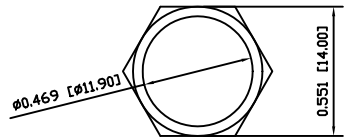
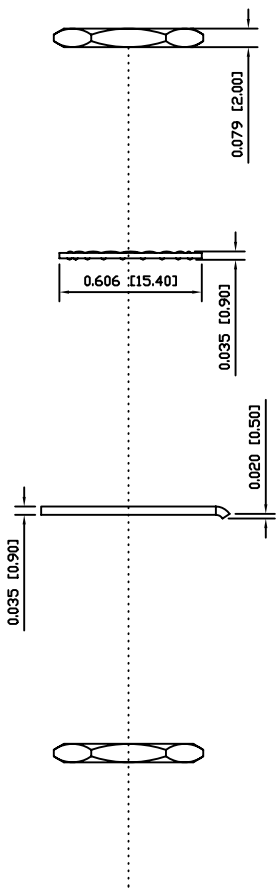
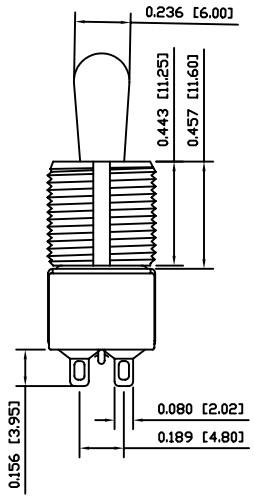
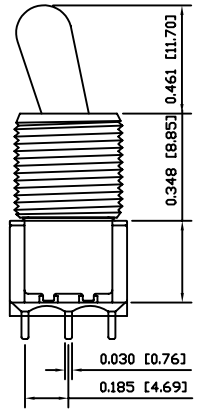
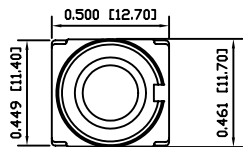


8 7 6 5 4 3 2 1

A  
B  
C  
D

A  
B  
C  
D



**SPECIFICATIONS**

**FUNCTION:**  
2P2T ON-ON

**RATINGS:**  
5A 125 VAC  
2A 250 VAC  
5A 28 VDC

**CONTACT RESISTANCE:**  
10mΩ Max. at 2-4VDC

**INSULATION RESISTANCE:**  
1,000MΩ Min.

**DIELECTRIC STRENGTH:**  
1,500VAC for 1 Minute

**ELECTRICAL LIFE:**  
50,000 Cycles at Full Load

**OPERATING TEMPERATURE:**  
-30°C to 85°C

**APPROVALS:**



**MATERIALS**

**BODY:**  
Diallyl Phthalate (DAP), UL 94V-0

**BODY COVER:**  
Stainless Steel

**ACTUATOR:**  
Chrome Plated Brass

**CONTACTS:**  
Silver Plated Copper

**ELECTRICAL TERMINALS:**  
Gold over Silver Plated Copper

**COLORS**

**BODY:**  
Red

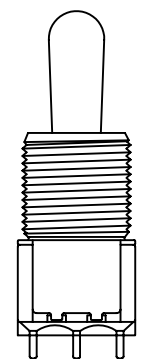
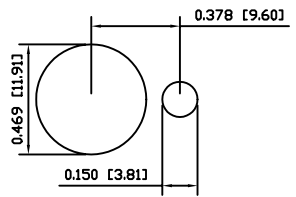
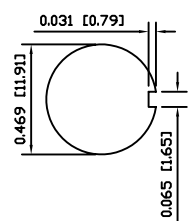
**BODY COVER:**  
Metallic

**ACTUATOR:**  
Metallic

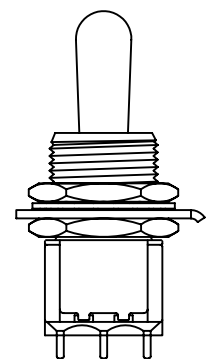
**SCHEMATIC**



**SUGGESTED PANEL CUTOUTS**



**EXPLODED VIEW**



**ASSEMBLED VIEW**



**LAST REVISION:**  
MAY. 17, 2005

UNLESS OTHERWISE SPECIFIED,  
DIMENSIONS ARE IN INCHES [MILLIMETERS]  
TOLERANCES ARE:  
DEC .X±0.2 ANG ± 1°  
.XXX±0.008 DRAWING NOT TO SCALE

**DRAWING NUMBER:** 17-5201-T1ZQE

**5201-T1ZQE**

8 7 6 5 4 3 2 1