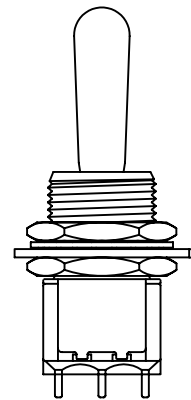
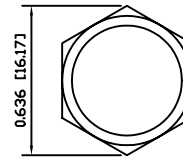
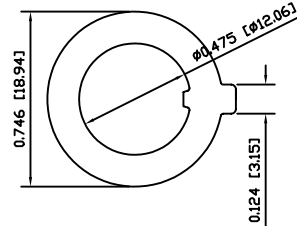
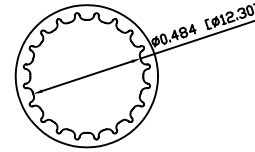
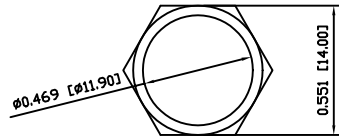


EXPLODED VIEW



ASSEMBLED VIEW

**SPECIFICATIONS**

FUNCTION:  
1P2T ON-ON

RATINGS:  
5A 125 VAC  
2A 250 VAC  
5A 28 VDC

CONTACT RESISTANCE:  
10mΩ Max. at 2-4VDC

INSULATION RESISTANCE:  
1,000MΩ Min.

DIELECTRIC STRENGTH:  
1,500VAC for 1 Minute

ELECTRICAL LIFE:  
50,000 Cycles at Full Load

OPERATING TEMPERATURE:  
-30°C to 85°C

APPROVALS:



**MATERIALS**

BODY:  
Diallyl Phthalate (DAP), UL 94V-0

BODY COVER:  
Stainless Steel

ACTUATOR:  
Chrome Plated Brass

CONTACTS:  
Silver Plated Copper

ELECTRICAL TERMINALS:  
Silver Plated Copper

**COLORS**

BODY:  
Red

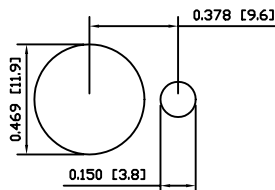
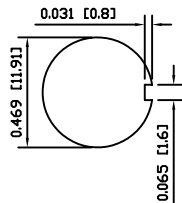
BODY COVER:  
Metallic

ACTUATOR:  
Metallic

**SCHEMATIC**



**SUGGESTED PANEL CUTOUTS**



8

7

6

5

4

3

2

1

UNLESS OTHERWISE SPECIFIED,  
DIMENSIONS ARE IN INCHES [MILLIMETERS]  
TOLERANCES ARE:  
DEC .X±0.2 ANG ± 1°  
.XXX±0.008 DRAWING NOT TO SCALE

**LAMB**  
INDUSTRIES P.O. Box 25110  
Portland, OR 97298

LAST REVISION:  
AUG. 02, 2004

DRAWING NUMBER: 17-5201-TZQE

5201-TZQE