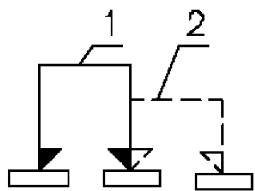
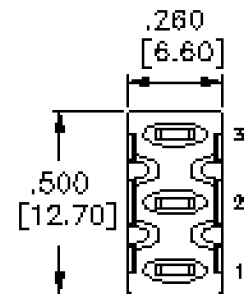
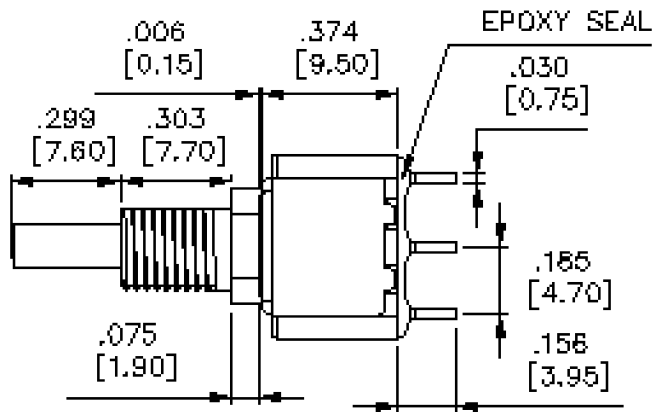
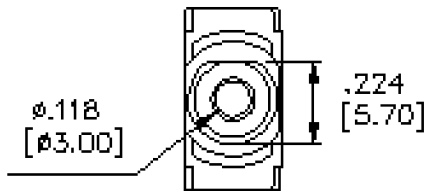
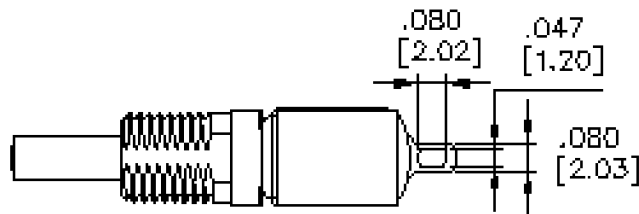


REVISIONS				
ZONE	REV	DESCRIPTION	DATE	APPROVED



SWITCHING SCHEMATIC



**CONTACT MATERIAL**

CENTER CONTACT & ALL TERMINALS: Copper alloy, silver plated.  
 Rating: 6 Amps with resistive load @ 125 VAC or 28 VDC.  
 3 Amps with resistive load @ 250 VAC.

ITEM	QTY.	DESCRIPTION	SUPPLIER
PARTS LIST			

DIMENSIONS ARE IN INCHES UNLESS OTHERWISE SPECIFIED. TOLERANCES ARE:		SIGNATURES		DATE	 LAMB INDUSTRIES INC. P.O. Box 25110 Portland, OR 97208
DEC.XX±0.01	FRAC ±	DWN			
.XXX±0.005	ANG ± 1'	CHK			<h1>8161-SHZGE</h1>
REMOVE BURRS. BREAK SHARP EDGES.	ENG				
MATERIAL		APPD			SIZE A SCALE
					DWG NO. 17-8161-SHZGE REV
					SHEET OF