

EXPLODED VIEW

ASSEMBLED VIEW

SPECIFICATIONS

FUNCTION:
2P2T ON-(ON)

RATINGS:
1A 120VAC
1A 38VDC

CONTACT RESISTANCE:
10mΩ Max. at 2-4VDC

INSULATION RESISTANCE:
1,000MΩ Min.

DIELECTRIC STRENGTH:
1,500VAC at Sea Level

ELECTRICAL LIFE:
50,000 Cycles at Full Load

OPERATING TEMPERATURE:
-30°C to 85°C

APPROVALS:



MATERIALS

BODY:
Dially Phthalate (DAP), UL 94V-0

BODY COVER:
Stainless Steel

ACTUATOR:
Glass Filled Nylon

BUSHING:
Nickel Plated Zinc

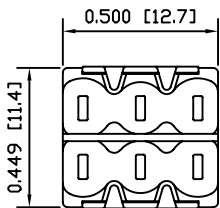
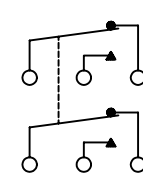
CONTACTS:
Silver Plated Coin Silver

ELECTRICAL TERMINALS:
Gold Over Silver Plated Copper Alloy

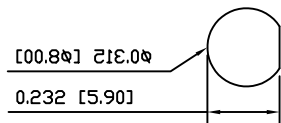
COLORS

BODY:
Red
BODY COVER:
Metallic
ACTUATOR:
White

SCHEMATIC



SUGGESTED PANEL CUTOUT



LAMB INDUSTRIES P.O. Box 25110 Portland, OR 97298

LAST REVISION:
JAN. 15, 2003

UNLESS OTHERWISE SPECIFIED,
DIMENSIONS ARE IN INCHES [MILLIMETERS]
TOLERANCES ARE:
DEC .X±0.2 ANG ± 1°
.XXX±0.008 DRAWING NOT TO SCALE

DRAWING NUMBER: 17-8221-SHZGE.dwg

8221-SHZGE