

**SPECIFICATIONS**

FUNCTION:  
1P2T ON-ON

RATINGS:  
0.4VA Max. at 20V AC or DC

CONTACT RESISTANCE:  
20mΩ Max. at 100mA 4VDC

INSULATION RESISTANCE:  
1,000MΩ Min.

DIELECTRIC STRENGTH:  
1,500VAC for 1 Minute

ELECTRICAL LIFE:  
30,000 Cycles at Full Load

OPERATING TEMPERATURE:  
-30°C to 85°C

INTRUSION PROTECTION:  
IP67 Standard

APPROVALS:



**MATERIALS**

BODY:  
Glass Filled Polyamide 4/6, UL 94V-0

ACTUATOR:  
Polyamide 6/6, UL94V-0

PIVOT:  
Chrome Plated Brass

SUPPORT:  
Tin Plated Brass

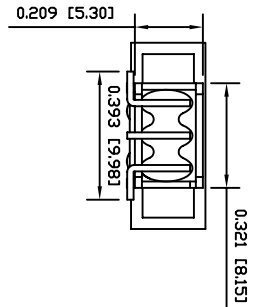
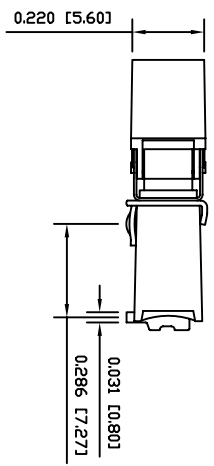
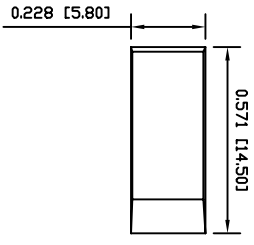
CONTACTS:  
Gold Over Nickel Plated Copper

ELECTRICAL TERMINALS:  
Gold Over Nickel Plated Copper

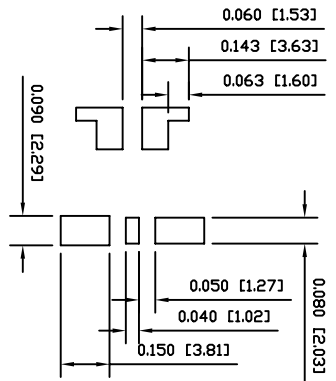
**COLORS**

BODY:  
White

ACTUATOR:  
Black



**SUGGESTED PCB LAYOUT**



UNLESS OTHERWISE SPECIFIED,  
DIMENSIONS ARE IN INCHES [MILLIMETERS]  
TOLERANCES ARE:  
DEC .X4-0.2 ANG ± 1°  
.XXX4-0.008 DRAWING NOT TO SCALE

**LAMB INDUSTRIES**  
P.O. Box 28110  
Portland, OR 97298

LAST REVISION:  
SEP 21, 2004

DRAWING NUMBER: 17-LTS01-J6SABE2  
**LTS01-J6SABE2**