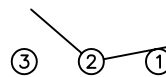
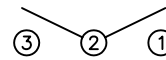


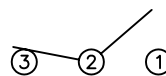
SCHEMATIC



POSITION 1
(MAINTAINED)



POSITION 2
(MAINTAINED)



POSITION 3
(MAINTAINED)

SPECIFICATIONS

FUNCTION:
1P2T ON-OFF-ON

RATINGS:
20A 125VAC [cULus]
12A 250VAC [cULus]
2HP 125/250VAC [cULus]

OPERATING LIFE:
6,000 Cycles [cULus]

CONTACT RESISTANCE:
Initial: 50mΩ Max. at 50VAC

INSULATION RESISTANCE:
800MΩ Min. at 500VDC

DIELECTRIC STRENGTH:
1,500VAC for 1 Minute

TEMPERATURE:
Operating: -20°C to 85°C

APPROVALS:



MATERIALS

BODY:
Phenolic, UL94 V-0

ACTUATOR:
Nickel Plated Brass

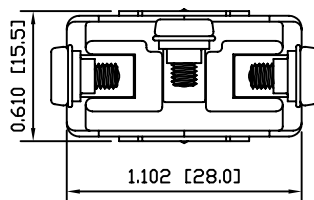
BUSHING:
Nickel Plated Brass

HOUSING:
Stainless Steel

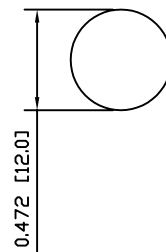
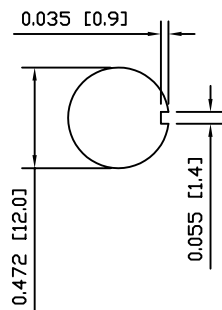
CONTACTS:
Silver Alloy

TERMINALS:
Brass

SUGGESTED PANEL CUTOUT



ALTERNATE PANEL CUTOUT



UNLESS OTHERWISE SPECIFIED,
DIMENSIONS ARE IN INCHES [MILLIMETERS]
TOLERANCES ARE:
DEC .X±0.2 ANG ± 1°
.XXX±0.008 DRAWING NOT TO SCALE
DRAWN BY: KEITH MARCOE

LAMB INDUSTRIES P.O. Box 25110
Portland, OR 97298

LAST REVISION:
APR 01, 2007

DRAWING NUMBER: 34-ST165D00.dwg

ST165D00