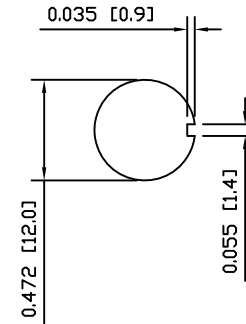
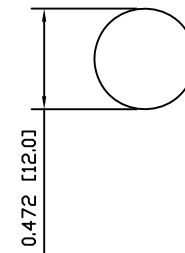


SUGGESTED PANEL CUTOUT



ALTERNATE PANEL CUTOUT



SPECIFICATIONS

FUNCTION:
2P2T ON-OFF-ON

RATINGS:
20A 125VAC [cULus]
12A 250VAC [cULus]
2HP 125/250VAC [cULus]

OPERATING LIFE:
6,000 Cycles [cULus]

CONTACT RESISTANCE:
Initial: 50mΩ Max. at 50VAC

INSULATION RESISTANCE:
800MΩ Min. at 500VDC

DIELECTRIC STRENGTH:
1,500VAC for 1 Minute

TEMPERATURE:
Operating: -20°C to 85°C

APPROVALS:



MATERIALS

BODY:
Phenolic, UL94 V-0

ACTUATOR:
Nickel Plated Brass

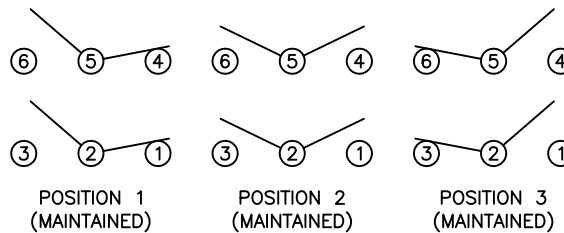
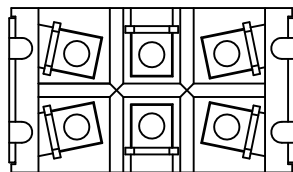
BUSHING:
Nickel Plated Brass

HOUSING:
Stainless Steel

CONTACTS:
Silver Alloy

TERMINALS:
Silver Plated Brass

SCHEMATIC



UNLESS OTHERWISE SPECIFIED,
DIMENSIONS ARE IN INCHES [MILLIMETERS]
TOLERANCES ARE:

DEC .X±0.2	ANG ± 1°
.XXX±0.008	DRAWING NOT TO SCALE
DRAWN BY: STACEY CHRISTIANSON	



P.O. Box 25110
Portland, OR 97298

LAST REVISION:
JULY 21, 2008

DRAWING NUMBER: 34-ST226D00.dwg

ST226D00