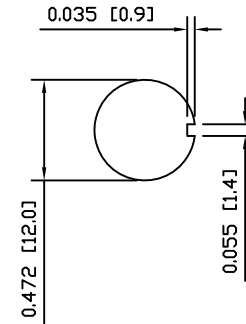
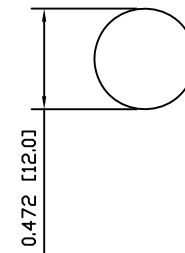


SUGGESTED PANEL CUTOUT



ALTERNATE PANEL CUTOUT



SPECIFICATIONS

FUNCTION:  
2P1T OFF-(ON)

RATINGS:  
20A 125VAC [cULus]  
12A 250VAC [cULus]  
1.5HP 125/250VAC [cULus]

OPERATING LIFE:  
6,000 Cycles [cULus]

CONTACT RESISTANCE:  
Initial: 50mΩ Max. at 50VAC

INSULATION RESISTANCE:  
800MΩ Min. at 500VDC

DIELECTRIC STRENGTH:  
1,500VAC for 1 Minute

TEMPERATURE:  
Operating: -20°C to 85°C

APPROVALS:



MATERIALS

BODY:  
Phenolic, UL94 V-0

ACTUATOR:  
Nickel Plated Brass

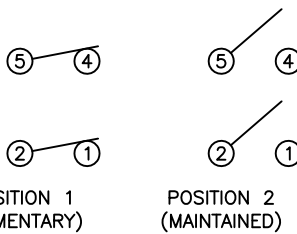
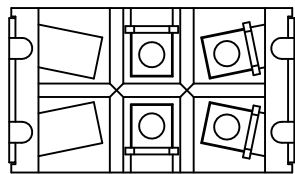
BUSHING:  
Nickel Plated Brass

HOUSING:  
Stainless Steel

CONTACTS:  
Silver Alloy

TERMINALS:  
Silver Plated Brass

SCHEMATIC



UNLESS OTHERWISE SPECIFIED,  
DIMENSIONS ARE IN INCHES [MILLIMETERS]  
TOLERANCES ARE:

DEC .X±0.2	ANG ± 1°
.XXX±0.008	DRAWING NOT TO SCALE
DRAWN BY: STACEY CHRISTIANSON	



P.O. Box 25110  
Portland, OR 97298

LAST REVISION:  
JULY 21, 2008

DRAWING NUMBER: 34-ST22ED00.dwg

ST22ED00