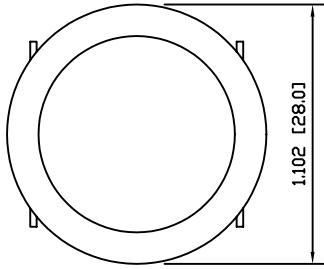


A



SCHEMATIC



SPECIFICATIONS

FUNCTION:
1P1T OFF-(ON)

RATINGS:
16A 125VAC [UL, cUL]
16(6)A 250V~ 1E4 T125 [VDE]
10(4)A 250V~ 5E4 T125 [VDE]

CONTACT RESISTANCE:
Initial: 35mΩ at 50VAC Min.

INSULATION RESISTANCE:
100MΩ at 500VDC Min.

WITHSTAND VOLTAGE:
1500VAC For 1 Minute

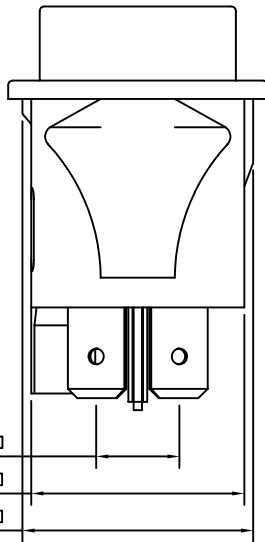
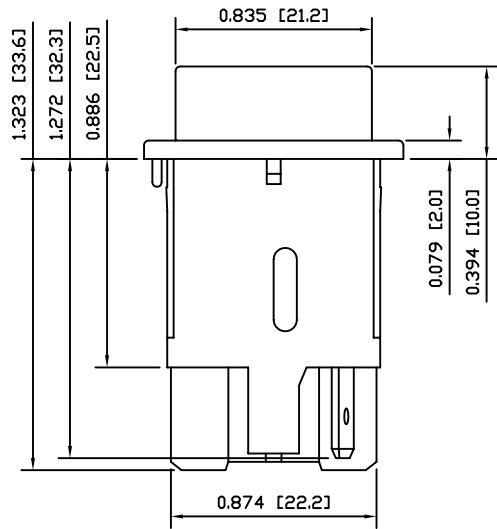
ELECTRICAL LIFE:
10,000 Cycles Min.

TEMPERATURE:
Operating: -20°C to 105°C [UL, cUL]
Operating: -20°C to 125°C [VDE]

APPROVALS:

A

B



B

C

MATERIALS

BODY:
Polyamide 6/6 (PA66), UL94 V-2

ACTUATOR:
Polyamide 6/6 (PA66), UL94 V-2

SPRING:
Steel

MOBILE CONTACT:
Silver Plated Copper

CONTACTS:
Silver Plated Copper

TERMINALS:
Silver Plated Copper

COLORS AND MARKINGS

BODY:
Black

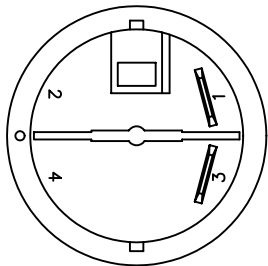
ACTUATOR:
Gloss Red

MARKINGS:
None

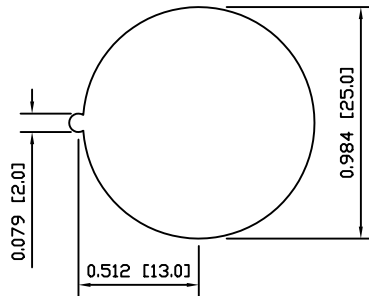
MARKING COLOR:
None

C

D



SUGGESTED PANEL CUTOUT



D

UNLESS OTHERWISE SPECIFIED, DIMENSIONS ARE IN INCHES [MILLIMETERS]	
DEC .X±0.2	ANG ± 1°
.XXX±0.008	DRAWING NOT TO SCALE

	P.O. Box 25110 Portland, OR 97298	LAST REVISION: OCT. 17, 2005
	DRAWING NUMBER: 38-PR144C1900.dwg	
<h1>PR144C1900</h1>		