

SCHEMATIC



SPECIFICATIONS

FUNCTION:
1P1T OFF-ON

RATINGS:
16A 125VAC [UL, cUL]
1/3HP 125/250VAC [UL, cUL]
10(4)A 250V~ μ 1E4 T125 [VDE]

CONTACT RESISTANCE:
Initial: 35mΩ at 50VAC Min.

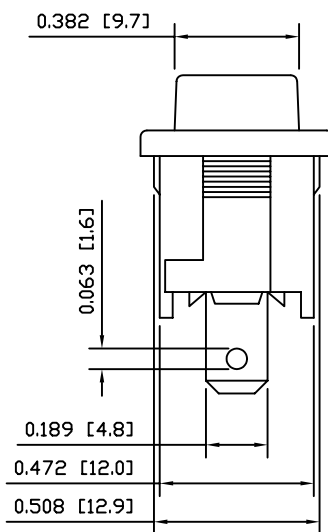
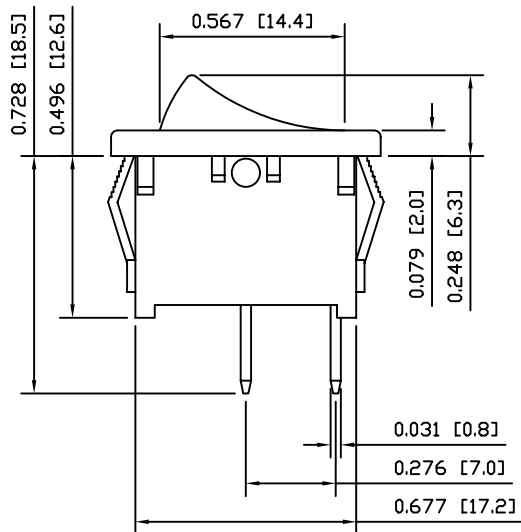
INSULATION RESISTANCE:
100MΩ at 500VDC Min.

WITHSTAND VOLTAGE:
1500VAC For 1 Minute

ELECTRICAL LIFE:
10,000 Cycles Min.

TEMPERATURE:
Operating: -20°C to 105°C

APPROVALS:



MATERIALS

BODY:
Polyamide 6/6 (PA66), UL94 V-2

ACTUATOR:
Polyamide 6/6 (PA66), UL94 V-2

SPRING:
Steel

BALL:
Steel

MOBILE CONTACT:
Silver Plated Copper

CONTACTS:
Silver Plated Copper

TERMINALS:
Silver Plated Copper

COLORS AND MARKINGS

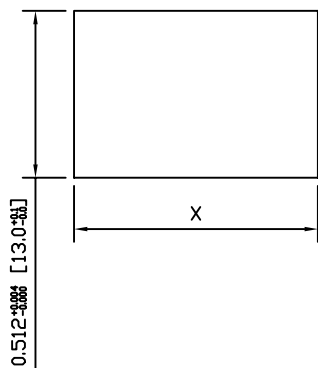
BODY:
Black

ACTUATOR:
Black

MARKINGS:
None

MARKING COLOR:
None

SUGGESTED PANEL CUTOUT



PANEL THICKNESS	X
0.030~0.049 [0.75~1.25]	0.756 [19.2]
0.049~0.079 [1.25~2.00]	0.764 [19.4]
0.079~0.118 [2.00~3.00]	0.772 [19.6]

UNLESS OTHERWISE SPECIFIED, DIMENSIONS ARE IN INCHES [MILLIMETERS]	
TOLERANCES ARE:	
DEC .X±0.2	ANG ± 1°
.XXX±0.008	DRAWING NOT TO SCALE

LAMB INDUSTRIES P.O. Box 25110
Portland, OR 97298

LAST REVISION:
OCT. 06, 2005

DRAWING NUMBER: 38-RA111C1100.dwg

RA111C1100