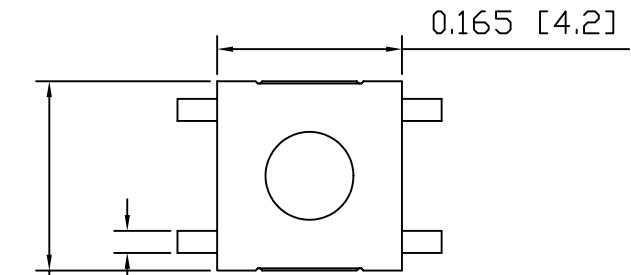


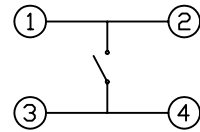
8 7 6 5 4 3 2 1

A

A



SCHEMATIC



SPECIFICATIONS

FUNCTION:  
1P1T OFF-(ON)

RATINGS:  
50mA 12VDC

OPERATING FORCE:  
160±50gf

TRAVEL:  
0.010±0.004 [0.25±0.1]

CONTACT RESISTANCE:  
Max. 100mΩ

INSULATION RESISTANCE:  
100MΩ at 100VDC

WITHSTAND VOLTAGE:  
250VAC For 1 Minute

ELECTRICAL LIFE:  
100,000 Cycles

SHOCK RESISTANCE:  
Mil-Std. 202, 30G Per Method 205

VIBRATION RESISTANCE:  
Mil-Std. 202, Method 201 and 205

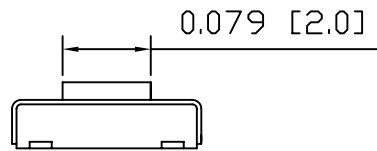
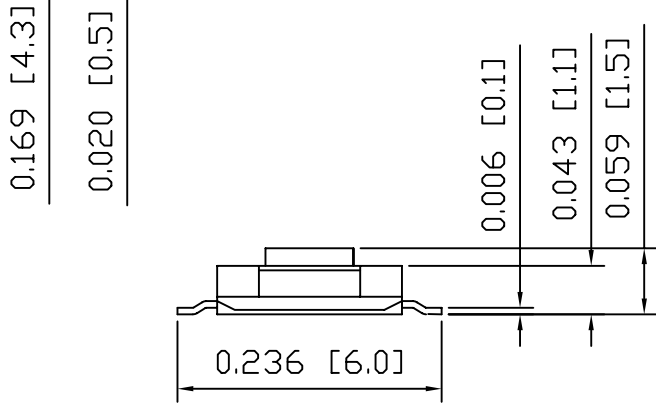
OPERATING TEMPERATURE:  
-20°C~70°C

STORAGE TEMPERATURE:  
-30°C~80°C

PACKAGING:  
Tape and Reel

B

B

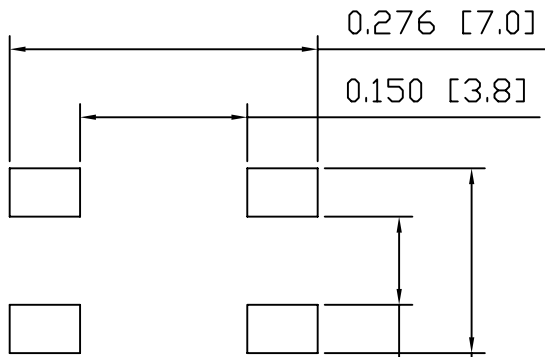


SUGGESTED PCB LAYOUT

MATERIALS

C

C



BASE:  
High Temp. Nylon 4/6, UL94V-0

COVER:  
Stainless Steel

ACTUATOR:  
High Temp. Nylon 4/6, UL94V-0

CONTACTS:  
Silver Plated Phosphor Bronze

TERMINALS:  
Silver Plated Brass

D

D

LAMB INDUSTRIES P.O. Box 25110 Portland, OR 97298  
LAST REVISION: MAR. 23, 2005

UNLESS OTHERWISE SPECIFIED, DIMENSIONS ARE IN INCHES [MILLIMETERS]  
TOLERANCES ARE:  
DEC .X±0.2 ANG ± 1°  
.XXX±0.008 DRAWING NOT TO SCALE

DRAWING NUMBER: 48-LJTP1140ATR.dwg

LJTP1140ATR

8 7 6 5 4 3 2 1