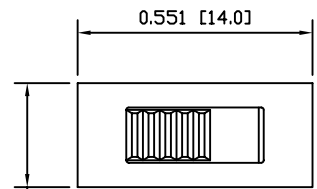
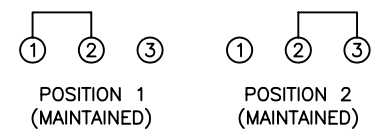


8 7 6 5 4 3 2 1



POSITION 1 POSITION 2

SCHEMATIC



SPECIFICATIONS

FUNCTION:
1P2T ON-ON, Non-Shorting

RATING:
300mA 125VAC
300mA 30VDC

ACTUATION FORCE:
220±100gf

CONTACT RESISTANCE:
Initial: 25mΩ Max. 1A 5VDC

INSULATION RESISTANCE:
100MΩ Min. 500VDC

WITHSTAND VOLTAGE:
500VAC for 1 Minute

ELECTRICAL LIFE:
10,000 Cycles Min.

APPROVALS:



MATERIALS

BODY:
Zinc Plated Steel

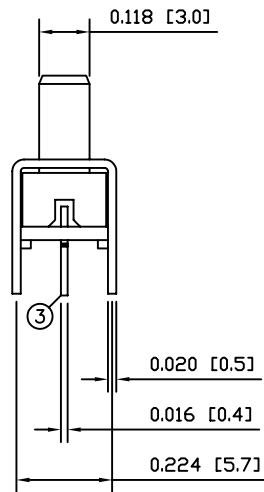
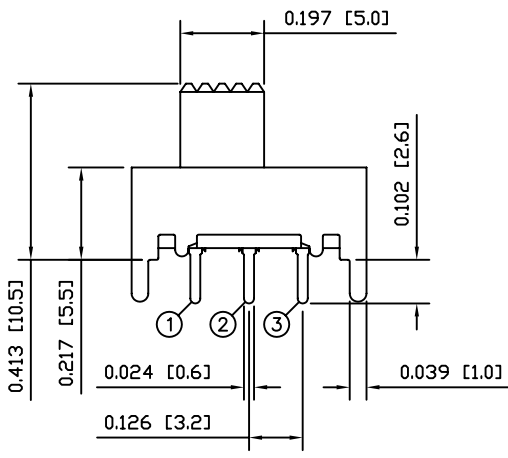
BASE:
Phenolic Laminated Sheet

ACTUATOR:
Nylon

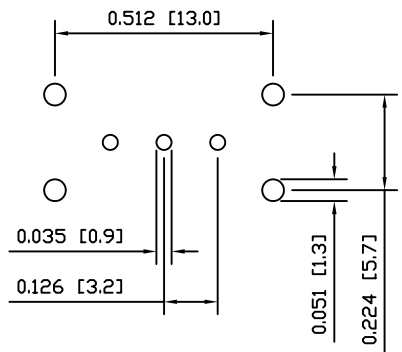
CONTACT:
Silver Plated Phosphor Bronze

TERMINALS:
Silver Plated Brass

TERMINAL SEALING:
Epoxy



SUGGESTED PCB LAYOUT



COLORS

BODY:
Metallic

ACTUATOR:
Black

8 7 6 5 4 3 2 1

UNLESS OTHERWISE SPECIFIED, DIMENSIONS ARE IN INCHES [MILLIMETERS]	
TOLERANCES ARE:	
DEC .X±0.2	ANG ± 1°
.XXX±0.008	DRAWING NOT TO SCALE
DRAWN BY: CARL BUCHHEIT	

LAMB INDUSTRIES P.O. Box 25110
Portland, OR 97298

LAST REVISION:
AUG. 29, 2006

DRAWING NUMBER: 50-SLB1280-4.dwg

SLB1280-4