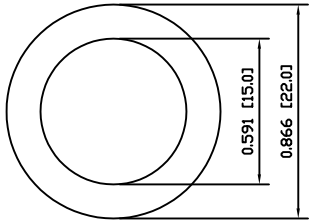


8 7 6 5 4 3 2 1

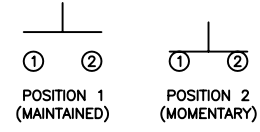
A



COLORS AND FINISH

BEZEL:
Stainless Steel
ACTUATOR:
Stainless Steel

SCHEMATIC

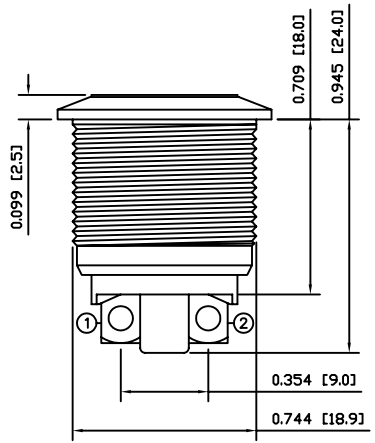


SPECIFICATIONS

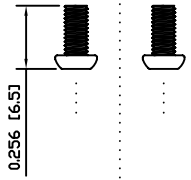
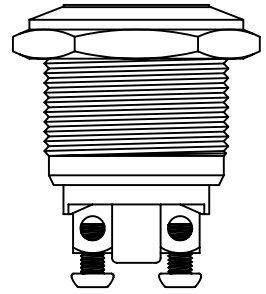
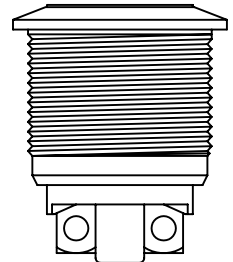
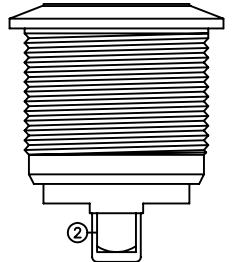
FUNCTION:
1P1T OFF-(ON)
RATING:
2A 48VDC
CONTACT RESISTANCE:
Initial: 50mΩ Max. at 1A 12VDC
INSULATION RESISTANCE:
1,000MΩ Min. at 500VDC
DIELECTRIC STRENGTH:
2,000VAC Min. for 1 Minute
ELECTRICAL LIFE:
200,000 Cycles Min.
MECHANICAL LIFE:
1,000,000 Cycles Min.
INTRUSION PROTECTION:
IP65
TEMPERATURE:
Operating: -20°C to 70°C

A

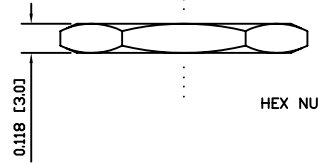
B



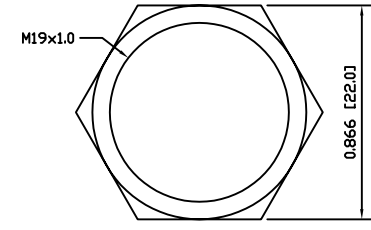
POSITION 1 —
POSITION 2 —



PHILLIPS SCREWS



HEX NUT



EXPLODED VIEW

ASSEMBLED VIEW

APPROVALS:

RoHS

MATERIALS

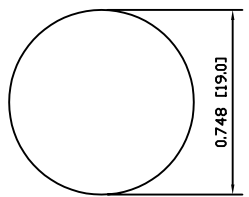
BUSHING:
Stainless Steel
BASE:
Polybutylene Terephthalate (PBT), UL94 V-2
ACTUATOR:
Stainless Steel
Brass (H59)
HARDWARE:
Nickel Plated Brass (H59)
SEALING:
Silicone
Stainless Steel
INNER ASSEMBLY:
Polyamide 6/6 (PA66)
Brass (H59)
SPRING:
Steel (Cr18Ni9)
CONTACTS:
Silver Plated Copper
TERMINALS:
Silver Plated Brass (H59)
Steel (A3)

B

C

C

SUGGESTED PANEL CUTOUT



MAXIMUM PANEL THICKNESS: 0.315 [8.0mm]

D

D

	P.O. Box 25110 Portland, OR 97298	LAST REVISION: SEPT. 13, 2007
	DRAWING NUMBER: 52-PV1F640SS.dwg	
<h1>PV1F640SS</h1>		

UNLESS OTHERWISE SPECIFIED,
DIMENSIONS ARE IN INCHES [MILLIMETERS]
TOLERANCES ARE:
DEC .X±0.2 ANG ± 1°
.XXX±0.008 DRAWING NOT TO SCALE
DRAWN BY: CARL BUCHHEIT

8 7 6 5 4 3 2 1