

8

7

6

5

4

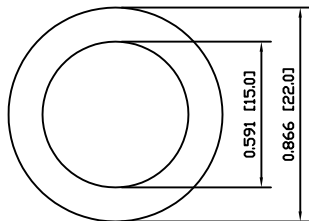
3

2

1

A

A



COLORS AND FINISH

BEZEL:  
Bright Nickel  
  
ACTUATOR:  
Bright Nickel

SCHEMATIC

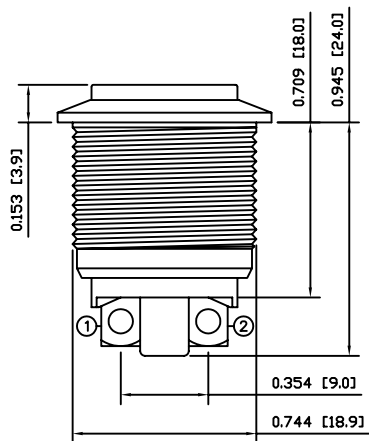


SPECIFICATIONS

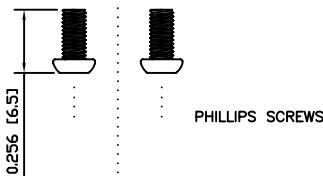
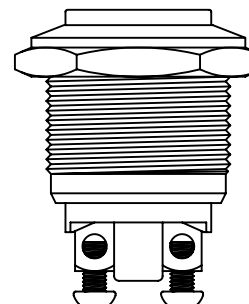
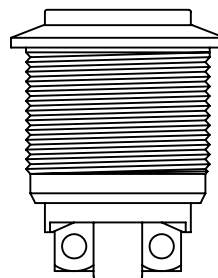
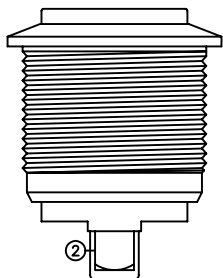
FUNCTION:  
1P1T OFF-(ON)  
  
RATING:  
2A 48VDC  
  
CONTACT RESISTANCE:  
Initial: 50mΩ Max. at 1A 12VDC  
  
INSULATION RESISTANCE:  
1,000MΩ Min. at 500VDC  
  
DIELECTRIC STRENGTH:  
2,000VAC Min. for 1 Minute  
  
ELECTRICAL LIFE:  
200,000 Cycles Min.  
  
MECHANICAL LIFE:  
1,000,000 Cycles Min.  
  
INTRUSION PROTECTION:  
IP65  
  
TEMPERATURE:  
Operating: -20°C to 70°C

B

B



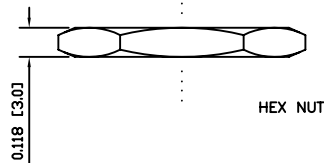
POSITION 1 —  
POSITION 2 —



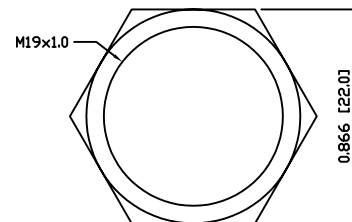
PHILLIPS SCREWS

C

C



HEX NUT



ASSEMBLED VIEW

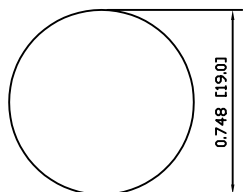
APPROVALS:

**RoHS**

MATERIALS

BUSHING:  
Nickel Plated Brass (H62)  
  
BASE:  
Polybutylene Terephthalate (PBT), UL94 V-2  
  
ACTUATOR:  
Nickel Plated Brass (H59)  
  
HARDWARE:  
Nickel Plated Brass (H59)  
  
SEALING:  
Silicone  
Stainless Steel  
  
INNER ASSEMBLY:  
Polyamide 6/6 (PA66)  
Brass (H59)  
  
SPRING:  
Steel (Cr18Ni9)  
  
CONTACTS:  
Silver Plated Copper  
  
TERMINALS:  
Silver Plated Brass (H59)  
Steel (A3)

SUGGESTED PANEL CUTOUT



MAXIMUM PANEL THICKNESS: 0.315 [8.0mm]

D

D

UNLESS OTHERWISE SPECIFIED, DIMENSIONS ARE IN INCHES [MILLIMETERS] TOLERANCES ARE:	
DEC .X±0.2	ANG ± 1°
.XXX±0.008	DRAWING NOT TO SCALE
DRAWN BY: CARL BUCHHEIT	

**LAMB**  
INDUSTRIES P.O. Box 25110  
Portland, OR 97298

LAST REVISION:  
SEPT. 13, 2007

DRAWING NUMBER: 52-PV1H640NN.dwg

PV1H640NN

8

7

6

5

4

3

2

1