

8

7

6

5

4

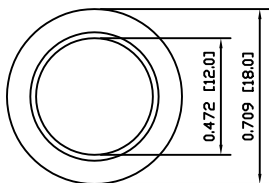
3

2

1

A

A



COLORS AND FINISH

BEZEL:
Gold
ACTUATOR:
Gold

SCHEMATIC

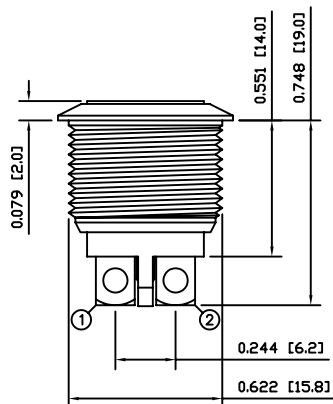


SPECIFICATIONS

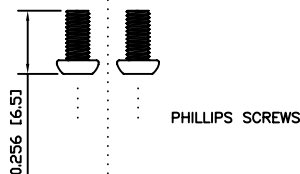
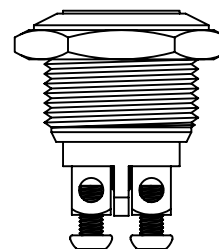
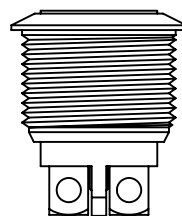
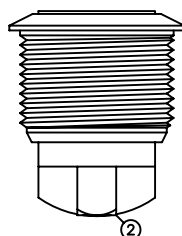
FUNCTION:
1P1T OFF-(ON)
RATING:
2A 48VDC
CONTACT RESISTANCE:
Initial: 50mΩ Max. at 1A 12VDC
INSULATION RESISTANCE:
1,000MΩ Min. at 500VDC
DIELECTRIC STRENGTH:
2,000VAC Min. for 1 Minute
ELECTRICAL LIFE:
200,000 Cycles Min.
MECHANICAL LIFE:
1,000,000 Cycles Min.
INTRUSION PROTECTION:
IP65
TEMPERATURE:
Operating: -20°C to 70°C

B

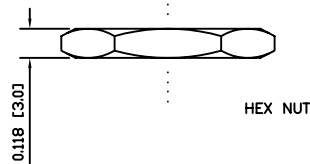
B



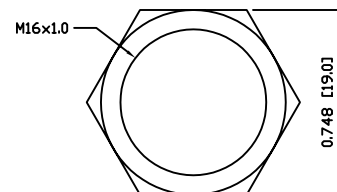
POSITION 1 —
POSITION 2 —



PHILLIPS SCREWS



HEX NUT



EXPLODED VIEW

ASSEMBLED VIEW

APPROVALS:

RoHS

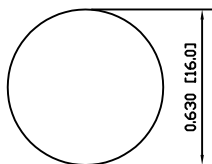
MATERIALS

BUSHING:
Gold Plated Brass (H62)
BASE:
Polybutylene Terephthalate (PBT), UL94 V-2
ACTUATOR:
Gold Plated Brass (H59)
HARDWARE:
Nickel Plated Brass (H59)
SEALING:
Silicone
INNER ASSEMBLY:
Polyamide 6/6 (PA66)
Brass (H62)
SPRING:
Stainless Steel (304)
CONTACTS:
Silver Plated Brass (H62)
TERMINALS:
Silver Plated Brass (H62)
Steel (A3)

C

C

SUGGESTED PANEL CUTOUT



MAXIMUM PANEL THICKNESS: 0.236 [6.0mm]

D

D



LAST REVISION:
SEPT. 13, 2007

UNLESS OTHERWISE SPECIFIED,
DIMENSIONS ARE IN INCHES [MILLIMETERS]
TOLERANCES ARE:
DEC .X±0.2 ANG ± 1°
.XXX±0.008 DRAWING NOT TO SCALE
DRAWN BY: CARL BUCHHEIT

DRAWING NUMBER: 52-PV2F640GG.dwg

PV2F640GG

8

7

6

5

4

3

2

1