

8

7

6

5

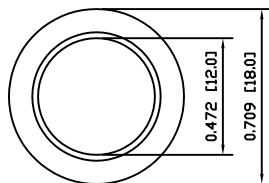
4

3

2

1

A



COLORS AND FINISH

BEZEL:
Gold

ACTUATOR:
Gold

SCHEMATIC



SPECIFICATIONS

FUNCTION:
1P1T OFF-(ON)

RATING:
2A 48VDC

CONTACT RESISTANCE:
Initial: 50mΩ Max. at 1A 12VDC

INSULATION RESISTANCE:
1,000MΩ Min. at 500VDC

DIELECTRIC STRENGTH:
2,000VAC Min. for 1 Minute

ELECTRICAL LIFE:
200,000 Cycles Min.

MECHANICAL LIFE:
1,000,000 Cycles Min.

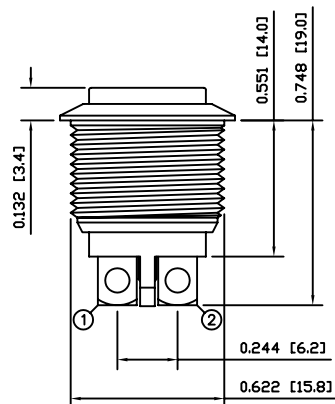
INTRUSION PROTECTION:
IP65

TEMPERATURE:
Operating: -20°C to 70°C

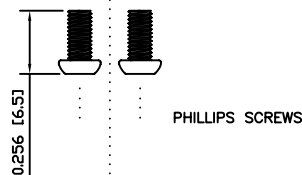
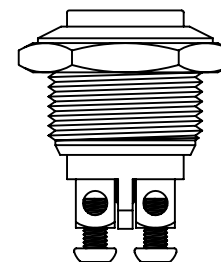
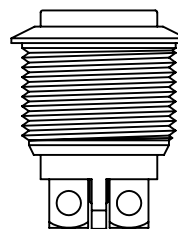
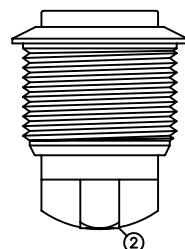
APPROVALS:

RoHS

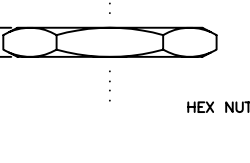
B



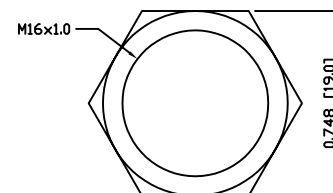
POSITION 1 =
POSITION 2 =



PHILLIPS SCREWS



HEX NUT



EXPLODED VIEW

ASSEMBLED VIEW

MATERIALS

BUSHING:
Gold Plated Brass (H62)

BASE:
Polybutylene Terephthalate (PBT), UL94 V-2

ACTUATOR:
Gold Plated Brass (H59)

HARDWARE:
Nickel Plated Brass (H59)

SEALING:
Silicone

INNER ASSEMBLY:
Polyamide 6/6 (PA66)
Brass (H62)

SPRING:
Stainless Steel (304)

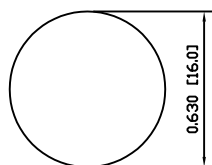
CONTACTS:
Silver Plated Brass (H62)

TERMINALS:
Silver Plated Brass (H62)
Steel (A3)

C

C

SUGGESTED PANEL CUTOUT



MAXIMUM PANEL THICKNESS: 0.236 [6.0mm]

D

D



LAST REVISION:
SEPT. 13, 2007

UNLESS OTHERWISE SPECIFIED,
DIMENSIONS ARE IN INCHES [MILLIMETERS]
TOLERANCES ARE:

DEC .X±0.2 ANG ± 1°

.XXX±0.008 DRAWING NOT TO SCALE

DRAWN BY: CARL BUCHHEIT

DRAWING NUMBER: 52-PV2H640GG.dwg

PV2H640GG

8

7

6

5

4

3

2

1