

8

7

6

5

4

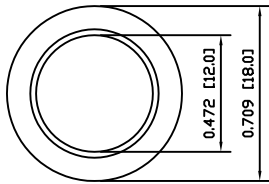
3

2

1

A

A

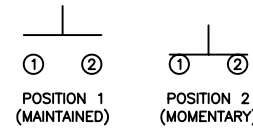


COLORS AND FINISH

BEZEL:
Bright Nickel

ACTUATOR:
Bright Nickel

SCHEMATIC



SPECIFICATIONS

FUNCTION:
1P1T OFF-(ON)

RATING:
2A 48VDC

CONTACT RESISTANCE:
Initial: 50mΩ Max. at 1A 12VDC

INSULATION RESISTANCE:
1,000MΩ Min. at 500VDC

DIELECTRIC STRENGTH:
2,000VAC Min. for 1 Minute

ELECTRICAL LIFE:
200,000 Cycles Min.

MECHANICAL LIFE:
1,000,000 Cycles Min.

INTRUSION PROTECTION:
IP65

TEMPERATURE:
Operating: -20°C to 70°C

APPROVALS:

RoHS

MATERIALS

BUSHING:
Nickel Plated Brass (H62)

BASE:
Polybutylene Terephthalate (PBT), UL94 V-2

ACTUATOR:
Nickel Plated Brass (H59)

HARDWARE:
Nickel Plated Brass (H59)

SEALING:
Silicone

INNER ASSEMBLY:
Polyamide 6/6 (PA66)
Brass (H62)

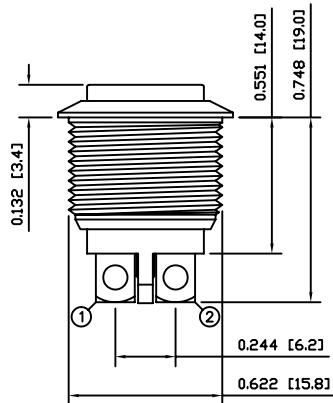
SPRING:
Stainless Steel (304)

CONTACTS:
Silver Plated Brass (H62)

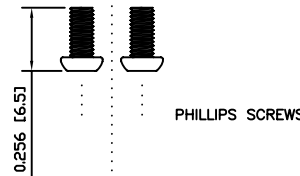
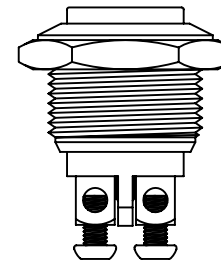
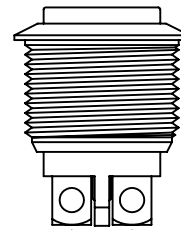
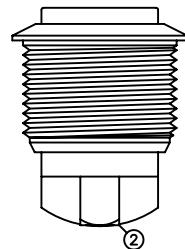
TERMINALS:
Silver Plated Brass (H62)
Steel (A3)

B

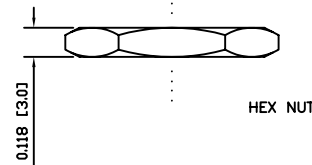
B



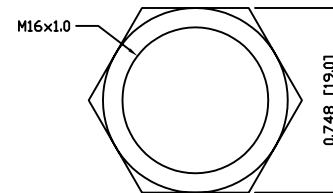
POSITION 1 =
POSITION 2 =



PHILLIPS SCREWS



HEX NUT



M16x1.0

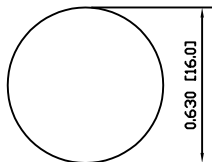
EXPLODED VIEW

ASSEMBLED VIEW

C

C

SUGGESTED PANEL CUTOUT



MAXIMUM PANEL THICKNESS: 0.236 [6.0mm]

D

D



P.O. Box 25110
Portland, OR 97298

LAST REVISION:
SEPT. 13, 2007

UNLESS OTHERWISE SPECIFIED,
DIMENSIONS ARE IN INCHES [MILLIMETERS]
TOLERANCES ARE:

DEC .X±0.2 ANG ± 1°

.XXX±0.008 DRAWING NOT TO SCALE

DRAWN BY: CARL BUCHHEIT

DRAWING NUMBER: 52-PV2H640NN.dwg

PV2H640NN

8

7

6

5

4

3

2

1