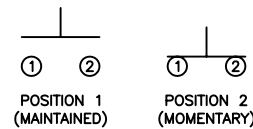


COLORS AND FINISH

BEZEL:
Stainless Steel
ACTUATOR:
Stainless Steel

SCHEMATIC



SPECIFICATIONS

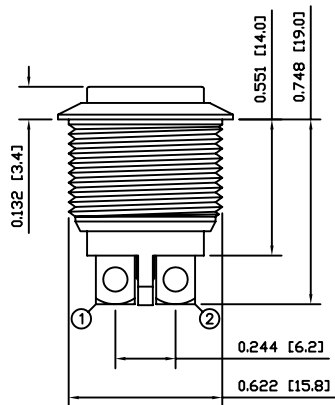
FUNCTION:
1P1T OFF-(ON)
RATING:
2A 48VDC
CONTACT RESISTANCE:
Initial: 50mΩ Max. at 1A 12VDC
INSULATION RESISTANCE:
1,000MΩ Min. at 500VDC
DIELECTRIC STRENGTH:
2,000VAC Min. for 1 Minute
ELECTRICAL LIFE:
200,000 Cycles Min.
MECHANICAL LIFE:
1,000,000 Cycles Min.
INTRUSION PROTECTION:
IP65
TEMPERATURE:
Operating: -20°C to 70°C

APPROVALS:

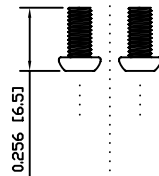
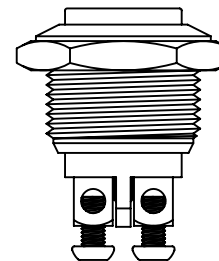
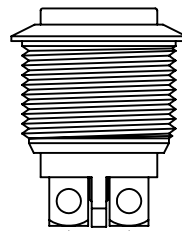
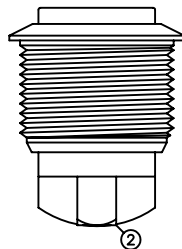
RoHS

MATERIALS

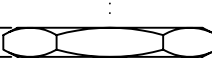
BUSHING:
Stainless Steel (304)
BASE:
Polybutylene Terephthalate (PBT), UL94 V-2
ACTUATOR:
Stainless Steel (304)
HARDWARE:
Nickel Plated Brass (H59)
SEALING:
Silicone
INNER ASSEMBLY:
Polyamide 6/6 (PA66)
Brass (H62)
SPRING:
Stainless Steel (304)
CONTACTS:
Silver Plated Brass (H62)
TERMINALS:
Silver Plated Brass (H62)
Steel (A3)



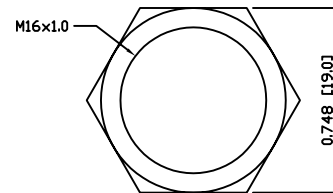
POSITION 1 =
POSITION 2 =



PHILLIPS SCREWS



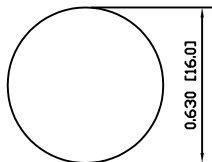
HEX NUT



EXPLODED VIEW

ASSEMBLED VIEW

SUGGESTED PANEL CUTOUT



MAXIMUM PANEL THICKNESS: 0.236 [6.0mm]

| | |
|--|----------------------|
| UNLESS OTHERWISE SPECIFIED, DIMENSIONS ARE IN INCHES [MILLIMETERS] TOLERANCES ARE: | |
| DEC .X±0.2 | ANG ± 1° |
| .XXX±0.008 | DRAWING NOT TO SCALE |
| DRAWN BY: CARL BUCHHEIT | |



P.O. Box 25110
Portland, OR 97298

LAST REVISION:
SEPT. 13, 2007

DRAWING NUMBER: 52-PV2H640SS.dwg

PV2H640SS