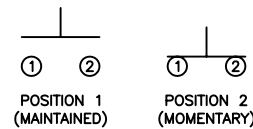


COLORS AND FINISH

BEZEL:  
Gold  
  
ACTUATOR:  
Gold

SCHEMATIC



SPECIFICATIONS

FUNCTION:  
1P1T OFF-(ON)  
  
RATING:  
2A 48VDC  
  
CONTACT RESISTANCE:  
Initial: 50mΩ Max. at 1A 12VDC  
  
INSULATION RESISTANCE:  
1,000MΩ Min. at 500VDC  
  
DIELECTRIC STRENGTH:  
2,000VAC Min. for 1 Minute  
  
ELECTRICAL LIFE:  
200,000 Cycles Min.  
  
MECHANICAL LIFE:  
1,000,000 Cycles Min.  
  
INTRUSION PROTECTION:  
IP65  
  
TEMPERATURE:  
Operating: -20°C to 70°C

APPROVALS:

**RoHS**

MATERIALS

BUSHING:  
Gold Plated Brass (H62)  
  
BASE:  
Polybutylene Terephthalate (PBT), UL94 V-2  
  
ACTUATOR:  
Gold Plated Brass (H59)  
  
HARDWARE:  
Nickel Plated Brass (H59)  
  
SEALING:  
Silicone  
  
INNER ASSEMBLY:  
Polyamide 6/6 (PA66)  
Brass (H62)  
  
SPRING:  
Stainless Steel (304)  
  
CONTACTS:  
Silver Plated Brass (H62)  
  
TERMINALS:  
Silver Plated Brass (H62)  
Steel (A3)

A

A

B

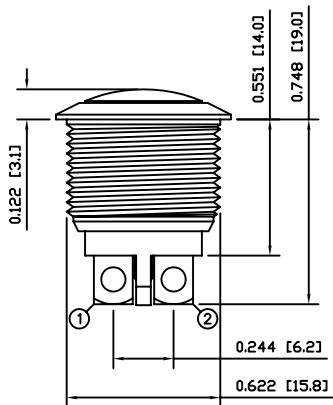
B

C

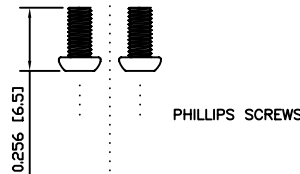
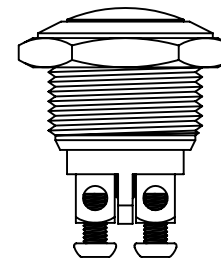
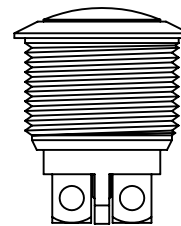
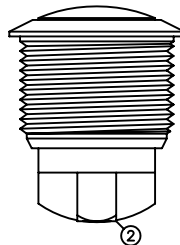
C

D

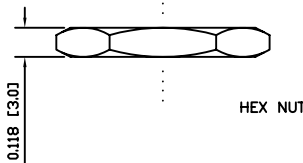
D



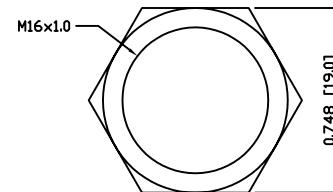
POSITION 1 —  
POSITION 2 —



PHILLIPS SCREWS



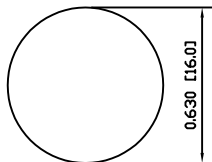
HEX NUT



EXPLODED VIEW

ASSEMBLED VIEW

SUGGESTED PANEL CUTOUT



MAXIMUM PANEL THICKNESS: 0.236 [6.0mm]

UNLESS OTHERWISE SPECIFIED, DIMENSIONS ARE IN INCHES [MILLIMETERS] TOLERANCES ARE:	
DEC .X±0.2	ANG ± 1°
.XXX±0.008	DRAWING NOT TO SCALE
DRAWN BY: CARL BUCHHEIT	

**LAMB**  
INDUSTRIES P.O. Box 25110  
Portland, OR 97298

LAST REVISION:  
SEPT. 13, 2007

DRAWING NUMBER: 52-PV2S640GG.dwg

PV2S640GG

8

7

6

5

4

3

2

1