

8

7

6

5

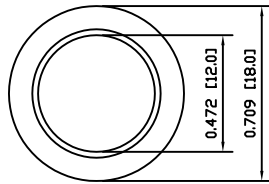
4

3

2

1

A

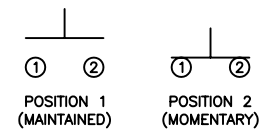


### COLORS AND FINISH

BEZEL:  
Bright Nickel

ACTUATOR:  
Bright Nickel

### SCHEMATIC



### SPECIFICATIONS

FUNCTION:  
1P1T OFF-(ON)

RATING:  
2A 48VDC

CONTACT RESISTANCE:  
Initial: 50mΩ Max. at 1A 12VDC

INSULATION RESISTANCE:  
1,000MΩ Min. at 500VDC

DIELECTRIC STRENGTH:  
2,000VAC Min. for 1 Minute

ELECTRICAL LIFE:  
200,000 Cycles Min.

MECHANICAL LIFE:  
1,000,000 Cycles Min.

INTRUSION PROTECTION:  
IP65

TEMPERATURE:  
Operating: -20°C to 70°C

### APPROVALS:

**RoHS**

### MATERIALS

BUSHING:  
Nickel Plated Brass (H62)

BASE:  
Polybutylene Terephthalate (PBT), UL94 V-2

ACTUATOR:  
Nickel Plated Brass (H59)

HARDWARE:  
Nickel Plated Brass (H59)

SEALING:  
Silicone

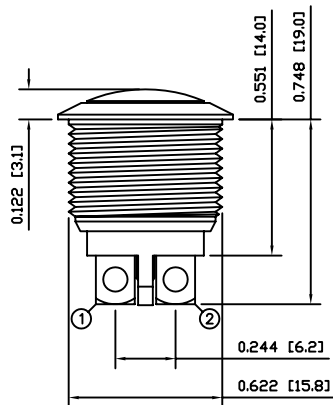
INNER ASSEMBLY:  
Polyamide 6/6 (PA66)  
Brass (H62)

SPRING:  
Stainless Steel (304)

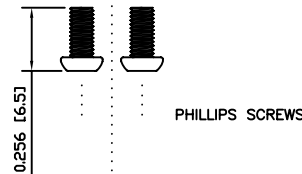
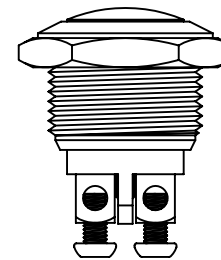
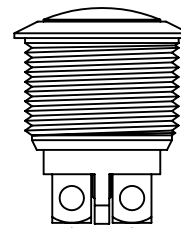
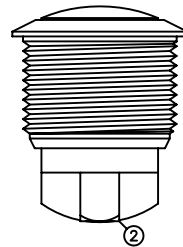
CONTACTS:  
Silver Plated Brass (H62)

TERMINALS:  
Silver Plated Brass (H62)  
Steel (A3)

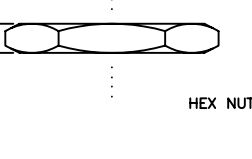
B



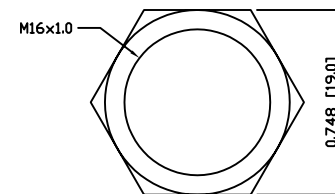
POSITION 1 —  
POSITION 2 —



PHILLIPS SCREWS



HEX NUT

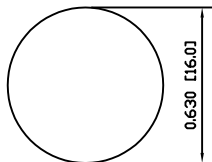


EXPLODED VIEW

ASSEMBLED VIEW

C

### SUGGESTED PANEL CUTOUT



MAXIMUM PANEL THICKNESS: 0.236 [6.0mm]

D

A

B

C

D



LAST REVISION:  
SEPT. 13, 2007

DRAWING NUMBER: 52-PV2S640NN.dwg

UNLESS OTHERWISE SPECIFIED,  
DIMENSIONS ARE IN INCHES [MILLIMETERS]  
TOLERANCES ARE:

DEC .X±0.2 ANG ± 1°

.XXX±0.008 DRAWING NOT TO SCALE

DRAWN BY: CARL BUCHHEIT

PV2S640NN

8

7

6

5

4

3

2

1