

8

7

6

5

4

3

2

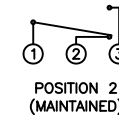
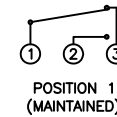
1

COLORS AND FINISH

BEZEL:
Bright Nickel

ACTUATOR:
Bright Nickel

SCHEMATIC



SPECIFICATIONS

FUNCTION:
1P2T ON-ON

RATING:
2A 48VDC

CONTACT RESISTANCE:
Initial: 50mΩ Max. at 1A 12VDC

INSULATION RESISTANCE:
1,000MΩ Min. at 500VDC

DIELECTRIC STRENGTH:
2,000VAC Min. for 1 Minute

ELECTRICAL LIFE:
50,000 Cycles

MECHANICAL LIFE:
1,000,000 Cycles

TEMPERATURE:
Operating: -20°C to 70°C

APPROVALS:

RoHS

MATERIALS

BUSHING:
Nickel Plated Brass (H62)

BASE:
Polybutylene Terephthalate (PBT), UL94 V-2
Polycarbonate (PC), UL94 V-2

ACTUATOR:
Nickel Plated Brass (H62)

HARDWARE:
Nickel Plated Brass (H62)

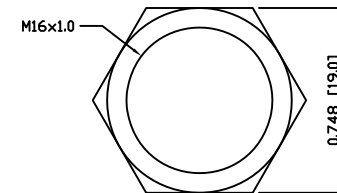
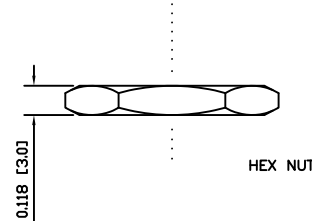
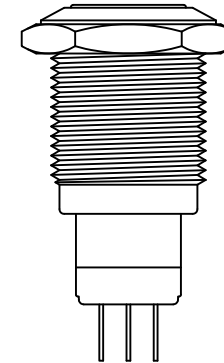
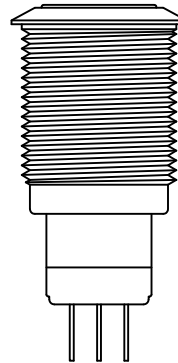
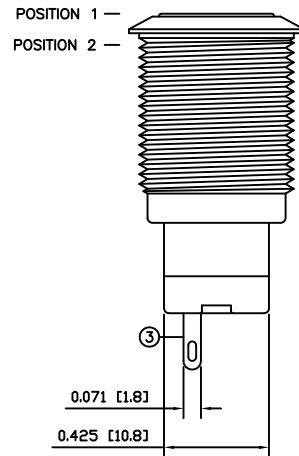
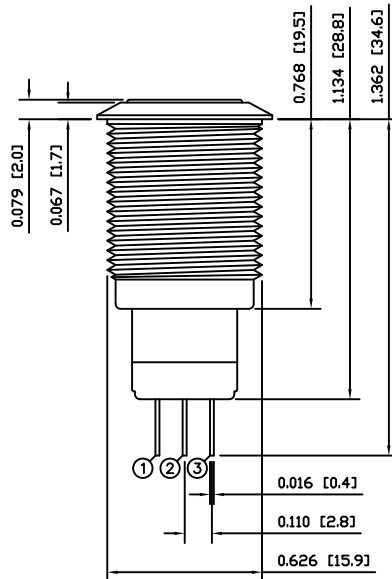
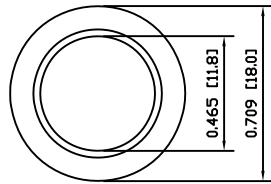
INNER ASSEMBLY:
Polyoxymethylene (POM), UL94 HB
Polycarbonate (PC), UL94 V-2
Brass (H62)

SPRING:
Phosphor Bronze

MOBILE CONTACT:
Phosphor Bronze

CONTACTS:
Nickel-Silver (AgNi10)

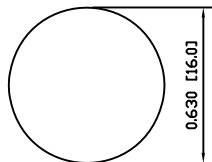
TERMINALS:
Silver Plated Brass (H62)



EXPLODED VIEW

ASSEMBLED VIEW

SUGGESTED PANEL CUTOUT



MAXIMUM PANEL THICKNESS: 0.551 [14.0mm]

UNLESS OTHERWISE SPECIFIED,
DIMENSIONS ARE IN INCHES [MILLIMETERS]
TOLERANCES ARE:

| | |
|-------------------------------|----------------------|
| DEC .X±0.2 | ANG ± 1° |
| .XXX±0.008 | DRAWING NOT TO SCALE |
| DRAWN BY: STACEY CHRISTIANSON | |

LAMB
INDUSTRIES P.O. Box 25110
Portland, OR 97298

LAST REVISION:
MAR. 11, 2008

DRAWING NUMBER: 52-PV3F230NN.dwg

PV3F230NN

8

7

6

5

4

3

2

1