

8

7

6

5

4

3

2

1

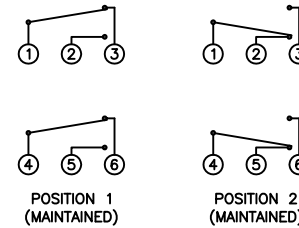
A

A

COLORS AND FINISH

BEZEL:  
Stainless Steel  
ACTUATOR:  
Stainless Steel

SCHEMATIC



SPECIFICATIONS

FUNCTION:  
2P2T ON-ON

RATING:  
2A 48VDC

CONTACT RESISTANCE:  
Initial: 50mΩ Max. at 1A 12VDC

INSULATION RESISTANCE:  
1,000MΩ Min. at 500VDC

DIELECTRIC STRENGTH:  
2,000VAC Min. for 1 Minute

ELECTRICAL LIFE:  
50,000 Cycles

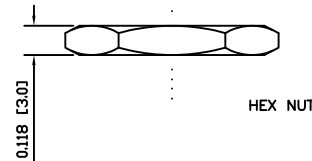
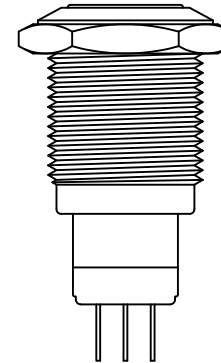
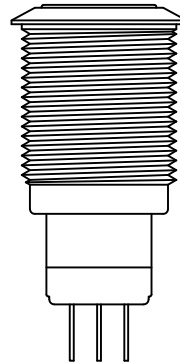
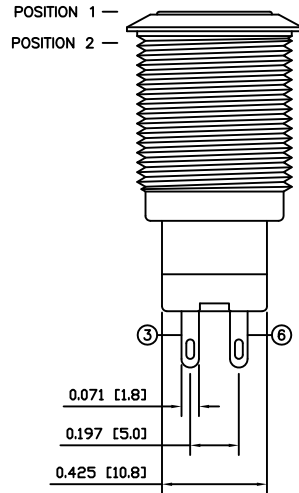
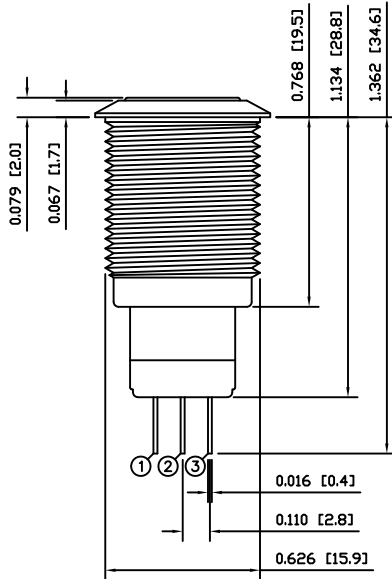
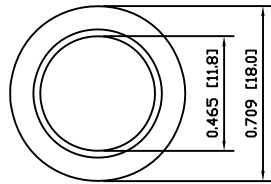
MECHANICAL LIFE:  
1,000,000 Cycles

TEMPERATURE:  
Operating: -20°C to 70°C

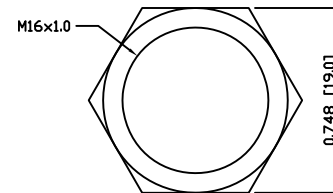
APPROVALS:



B



HEX NUT



EXPLODED VIEW

ASSEMBLED VIEW

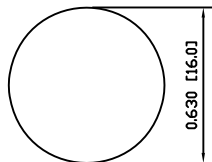
MATERIALS

- BUSHING:  
Stainless Steel (304)
- BASE:  
Polybutylene Terephthalate (PBT), UL94 V-2  
Polycarbonate (PC), UL94 V-2
- ACTUATOR:  
Stainless Steel (304)
- HARDWARE:  
Nickel Plated Brass (H62)
- INNER ASSEMBLY:  
Polyoxymethylene (POM), UL94 HB  
Polycarbonate (PC), UL94 V-2  
Brass (H62)
- SPRING:  
Phosphor Bronze
- MOBILE CONTACT:  
Phosphor Bronze
- CONTACTS:  
Nickel-Silver (AgNi10)
- TERMINALS:  
Silver Plated Brass (H62)

C

C

SUGGESTED PANEL CUTOUT



MAXIMUM PANEL THICKNESS: 0.551 [14.0mm]

D

D

UNLESS OTHERWISE SPECIFIED, DIMENSIONS ARE IN INCHES [MILLIMETERS] TOLERANCES ARE:	
DEC .X±0.2	ANG ± 1°
.XXX±0.008	DRAWING NOT TO SCALE
DRAWN BY: STACEY CHRISTIANSON	



P.O. Box 25110  
Portland, OR 97298

LAST REVISION:  
MAR. 11, 2008

DRAWING NUMBER: 52-PV3F2GOSS.dwg

PV3F2GOSS

8

7

6

5

4

3

2

1