

8

7

6

5

4

3

2

1

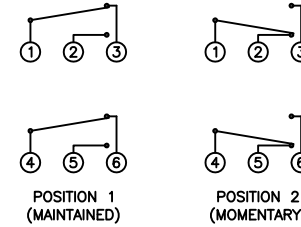
A

A

COLORS AND FINISH

BEZEL:
Stainless Steel
ACTUATOR:
Stainless Steel

SCHEMATIC



SPECIFICATIONS

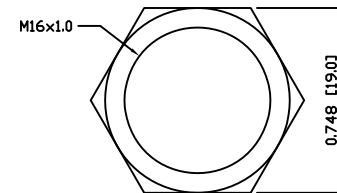
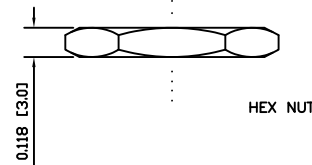
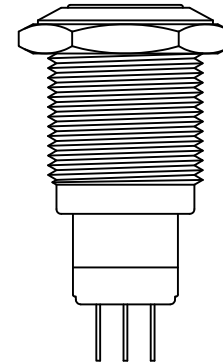
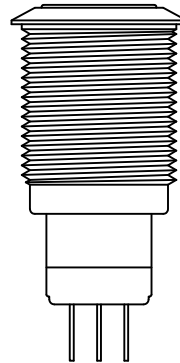
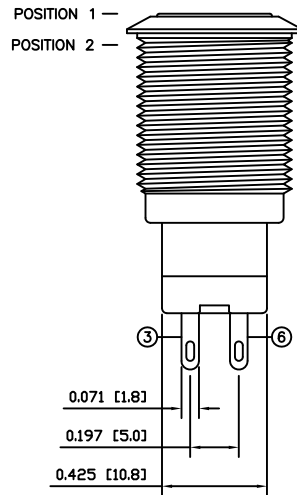
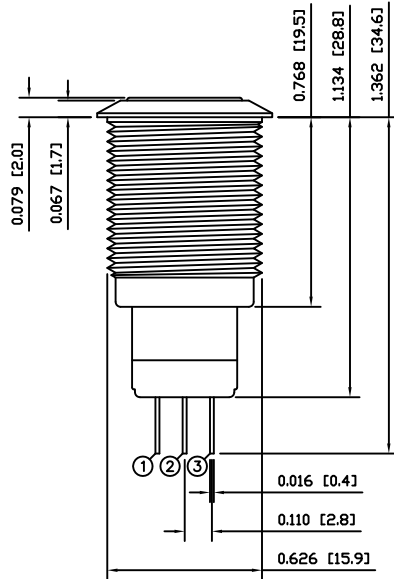
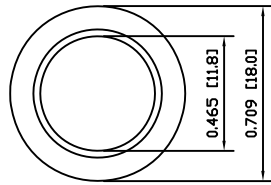
FUNCTION:
2P2T ON-(ON)
RATING:
2A 48VDC
CONTACT RESISTANCE:
Initial: 50mΩ Max. at 1A 12VDC
INSULATION RESISTANCE:
1,000MΩ Min. at 500VDC
DIELECTRIC STRENGTH:
2,000VAC Min. for 1 Minute
ELECTRICAL LIFE:
50,000 Cycles
MECHANICAL LIFE:
1,000,000 Cycles
TEMPERATURE:
Operating: -20°C to 70°C

APPROVALS:



MATERIALS

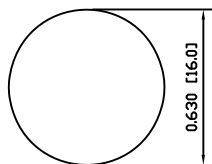
BUSHING:
Stainless Steel (304)
BASE:
Polybutylene Terephthalate (PBT), UL94 V-2
Polycarbonate (PC), UL94 V-2
ACTUATOR:
Stainless Steel (304)
HARDWARE:
Nickel Plated Brass (H62)
INNER ASSEMBLY:
Polyoxymethylene (POM), UL94 HB
Polycarbonate (PC), UL94 V-2
Brass (H62)
SPRING:
Phosphor Bronze
MOBILE CONTACT:
Phosphor Bronze
CONTACTS:
Nickel-Silver (AgNi10)
TERMINALS:
Silver Plated Brass (H62)



EXPLODED VIEW

ASSEMBLED VIEW

SUGGESTED PANEL CUTOUT



MAXIMUM PANEL THICKNESS: 0.551 [14.0mm]

Table with technical specifications: UNLESS OTHERWISE SPECIFIED, DIMENSIONS ARE IN INCHES [MILLIMETERS], TOLERANCES ARE: DEC .X±0.2 ANG ± 1°, .XXX±0.008 DRAWING NOT TO SCALE, DRAWN BY: STACEY CHRISTIANSON



P.O. Box 25110
Portland, OR 97298

LAST REVISION:
MAR. 11, 2008

DRAWING NUMBER: 52-PV3F2HOSS.dwg

PV3F2HOSS

8

7

6

5

4

3

2

1

D

D