

8

7

6

5

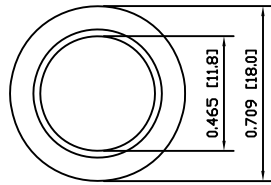
4

3

2

1

A

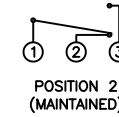
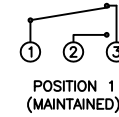


## COLORS AND FINISH

BEZEL:  
Stainless Steel

ACTUATOR:  
Stainless Steel

## SCHEMATIC



## SPECIFICATIONS

FUNCTION:  
1P2T ON-ON

RATING:  
2A 48VDC

CONTACT RESISTANCE:  
Initial: 50mΩ Max. at 1A 12VDC

INSULATION RESISTANCE:  
1,000MΩ Min. at 500VDC

DIELECTRIC STRENGTH:  
2,000VAC Min. for 1 Minute

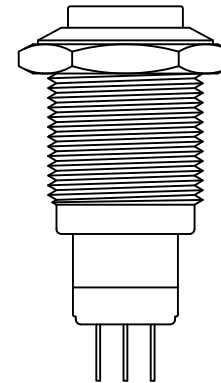
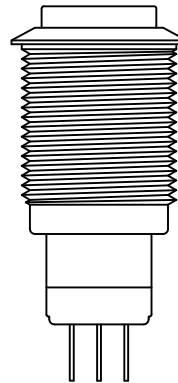
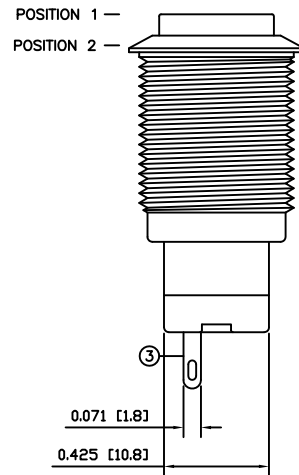
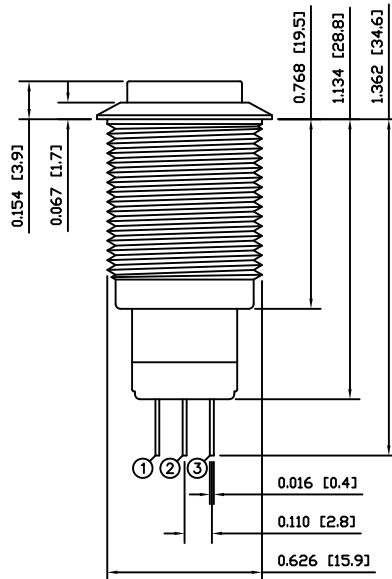
ELECTRICAL LIFE:  
50,000 Cycles

MECHANICAL LIFE:  
1,000,000 Cycles

TEMPERATURE:  
Operating: -20°C to 70°C

A

B



## APPROVALS:

**RoHS**

B

C

## MATERIALS

BUSHING:  
Stainless Steel (304)

BASE:  
Polybutylene Terephthalate (PBT), UL94 V-2  
Polycarbonate (PC), UL94 V-2

ACTUATOR:  
Stainless Steel (304)

HARDWARE:  
Nickel Plated Brass (H62)

INNER ASSEMBLY:  
Polyoxymethylene (POM), UL94 HB  
Polycarbonate (PC), UL94 V-2  
Brass (H62)

SPRING:  
Phosphor Bronze

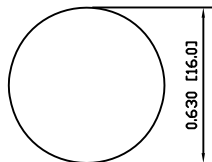
MOBILE CONTACT:  
Phosphor Bronze

CONTACTS:  
Nickel-Silver (AgNi10)

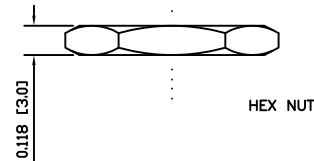
TERMINALS:  
Silver Plated Brass (H62)

C

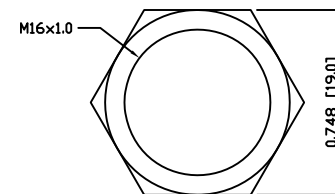
## SUGGESTED PANEL CUTOUT



MAXIMUM PANEL THICKNESS: 0.551 [14.0mm]



## EXPLODED VIEW



## ASSEMBLED VIEW

D



P.O. Box 25110  
Portland, OR 97298

LAST REVISION:  
MAR. 11, 2008

DRAWING NUMBER: 52-PV3H230SS.dwg

UNLESS OTHERWISE SPECIFIED,  
DIMENSIONS ARE IN INCHES [MILLIMETERS]  
TOLERANCES ARE:

DEC .X±0.2 ANG ± 1°

.XXX±0.008 DRAWING NOT TO SCALE

DRAWN BY: STACEY CHRISTIANSON

PV3H230SS

8

7

6

5

4

3

2

1