

8

7

6

5

4

3

2

1

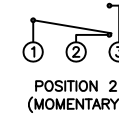
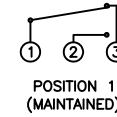
A

A

COLORS AND FINISH

BEZEL:
Stainless Steel
ACTUATOR:
Stainless Steel

SCHEMATIC



SPECIFICATIONS

FUNCTION:
1P2T ON-(ON)

RATING:
2A 48VDC

CONTACT RESISTANCE:
Initial: 50mΩ Max. at 1A 12VDC

INSULATION RESISTANCE:
1,000MΩ Min. at 500VDC

DIELECTRIC STRENGTH:
2,000VAC Min. for 1 Minute

ELECTRICAL LIFE:
50,000 Cycles

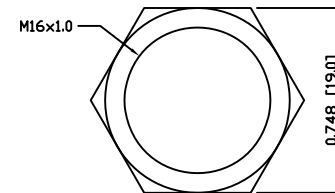
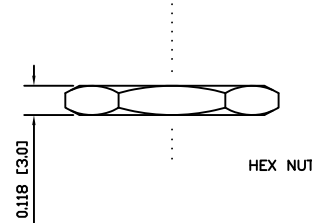
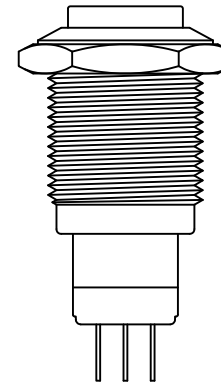
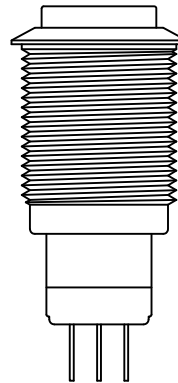
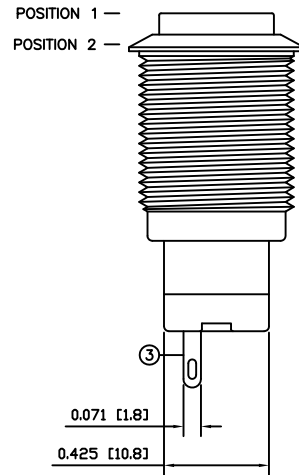
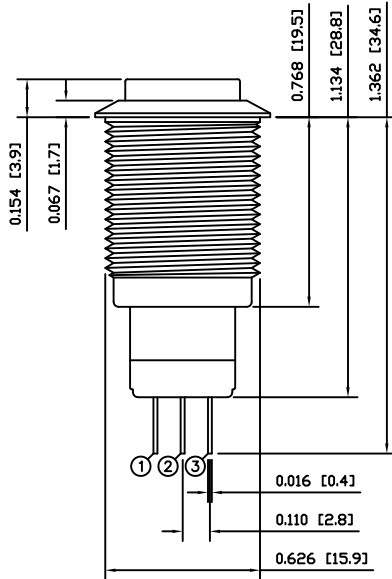
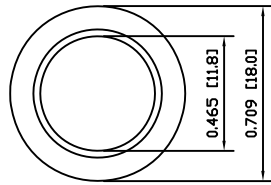
MECHANICAL LIFE:
1,000,000 Cycles

TEMPERATURE:
Operating: -20°C to 70°C

APPROVALS:



B



EXPLODED VIEW

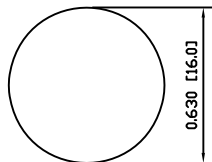
ASSEMBLED VIEW

MATERIALS

- BUSHING:
Stainless Steel (304)
- BASE:
Polybutylene Terephthalate (PBT), UL94 V-2
Polycarbonate (PC), UL94 V-2
- ACTUATOR:
Stainless Steel (304)
- HARDWARE:
Nickel Plated Brass (H62)
- INNER ASSEMBLY:
Polyoxymethylene (POM), UL94 HB
Polycarbonate (PC), UL94 V-2
Brass (H62)
- SPRING:
Phosphor Bronze
- MOBILE CONTACT:
Phosphor Bronze
- CONTACTS:
Nickel-Silver (AgNi10)
- TERMINALS:
Silver Plated Brass (H62)

C

SUGGESTED PANEL CUTOUT



MAXIMUM PANEL THICKNESS: 0.551 [14.0mm]

D

D

UNLESS OTHERWISE SPECIFIED, DIMENSIONS ARE IN INCHES [MILLIMETERS] TOLERANCES ARE:	
DEC .X±0.2	ANG ± 1°
.XXX±0.008	DRAWING NOT TO SCALE
DRAWN BY: STACEY CHRISTIANSON	



P.O. Box 25110
Portland, OR 97298

LAST REVISION:
MAR. 11, 2008

DRAWING NUMBER: 52-PV3H2BOSS.dwg

PV3H2BOSS

8

7

6

5

4

3

2

1