

8

7

6

5

4

3

2

1

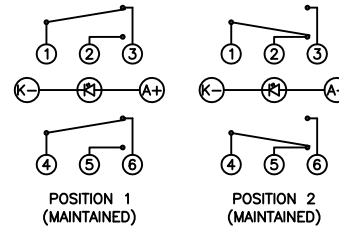
A

A

COLORS AND FINISH

BEZEL:
Bright Nickel
ACTUATOR:
Bright Nickel
ILLUMINATION:
Red

SCHEMATIC



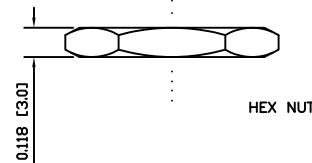
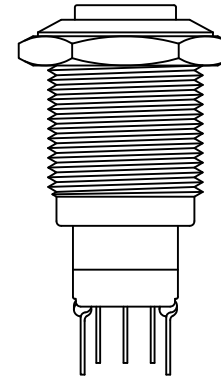
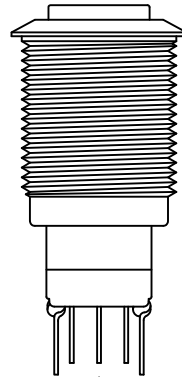
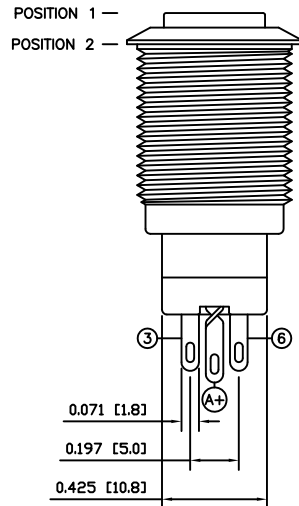
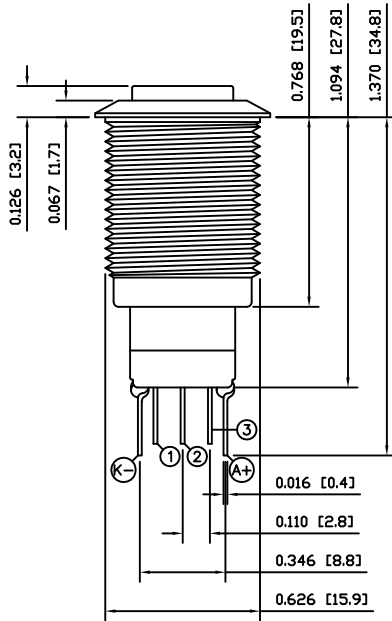
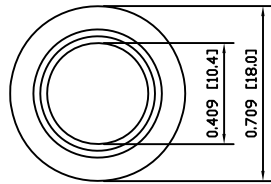
SPECIFICATIONS

FUNCTION:
2P2T ON-ON
RATING:
2A 48VDC
ILLUMINATION VOLTAGE:
12V
CONTACT RESISTANCE:
Initial: 50mΩ Max. at 1A 12VDC
INSULATION RESISTANCE:
1,000MΩ Min. at 500VDC
DIELECTRIC STRENGTH:
2,000VAC Min. for 1 Minute
ELECTRICAL LIFE:
50,000 Cycles
MECHANICAL LIFE:
1,000,000 Cycles
TEMPERATURE:
Operating: -20°C to 70°C
APPROVALS:

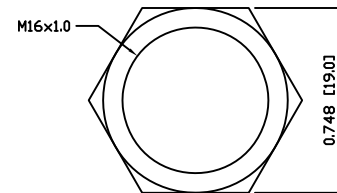
RoHS

MATERIALS

BUSHING:
Nickel Plated Brass (H62)
BASE:
Polybutylene Terephthalate (PBT), UL94 V-2
Polycarbonate (PC), UL94 V-2
ACTUATOR:
Nickel Plated Brass (H62)
ILLUMINATION LENS:
Polycarbonate (PC), UL94 V-2
HARDWARE:
Nickel Plated Brass (H62)
INNER ASSEMBLY:
Polyoxymethylene (POM), UL94 HB
Polycarbonate (PC), UL94 V-2
Brass (H62)
SPRING:
Phosphor Bronze
MOBILE CONTACT:
Phosphor Bronze
CONTACTS:
Nickel-Silver (AgNi10)
TERMINALS:
Silver Plated Brass (H62)

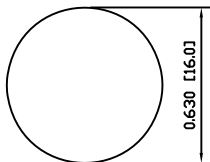


HEX NUT



ASSEMBLED VIEW

SUGGESTED PANEL CUTOUT



MAXIMUM PANEL THICKNESS: 0.551 [14.0mm]

EXPLODED VIEW

UNLESS OTHERWISE SPECIFIED, DIMENSIONS ARE IN INCHES [MILLIMETERS] TOLERANCES ARE:

DEC .X±0.2	ANG ± 1°
.XXX±0.008	DRAWING NOT TO SCALE
DRAWN BY: STACEY CHRISTIANSON	

LAMB INDUSTRIES P.O. Box 25110 Portland, OR 97298

LAST REVISION: MAR. 11, 2008

DRAWING NUMBER: 52-PV3H2GONN-314.dwg

PV3H2GONN-314

8

7

6

5

4

3

2

1

D

D