

8

7

6

5

4

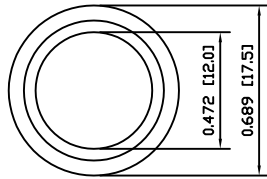
3

2

1

A

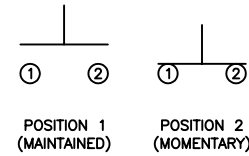
A



COLORS AND FINISH

BEZEL:
Black
ACTUATOR:
Green

SCHEMATIC



SPECIFICATIONS

FUNCTION:
1P1T OFF-(ON)
RATING:
2A 48VDC
CONTACT RESISTANCE:
Initial: 50mΩ Max. at 1A 12VDC
INSULATION RESISTANCE:
1,000MΩ Min. at 500VDC
DIELECTRIC STRENGTH:
2,000VAC Min. for 1 Minute
ELECTRICAL LIFE:
200,000 Cycles Min.
MECHANICAL LIFE:
1,000,000 Cycles Min.
INGRESS PROTECTION:
IP65
TEMPERATURE:
Operating: -20°C to 70°C

APPROVALS:

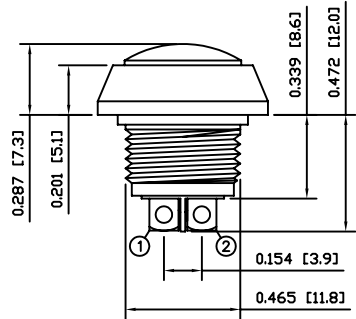
RoHS

MATERIALS

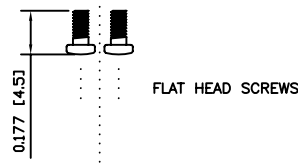
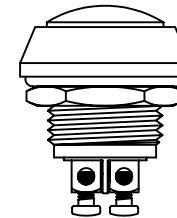
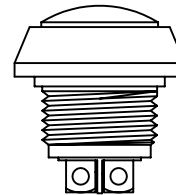
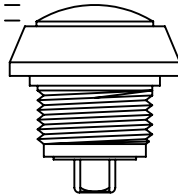
BUSHING:
Aluminum
BASE:
Polybutylene Terephthalate (PBT), UL94 V-2
ACTUATOR:
Polybutylene Terephthalate (PBT), UL94 V-2
HARDWARE:
Brass (H59)
SEALING:
Silicone
INNER ASSEMBLY:
Polyamide 6/6 (PA66)
Brass (H62)
SPRING:
Stainless Steel (304)
CONTACTS:
Silver Plated Brass (H62)
TERMINALS:
Silver Plated Brass (H62)
Steel (A3)
O-RING:
Nitrile Butadiene Rubber (NBR)

B

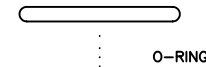
B



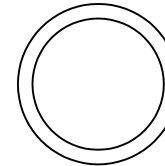
POSITION 1
POSITION 2



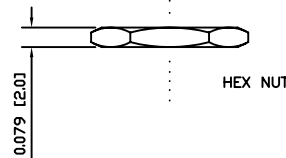
0.177 [4.5]
FLAT HEAD SCREWS



O-RING

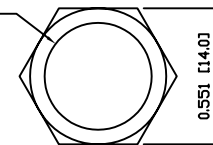


M12x1.0



0.079 [2.0]
HEX NUT

EXPLODED VIEW

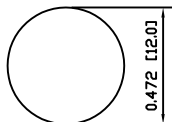


0.551 [14.0]
ASSEMBLED VIEW

C

C

SUGGESTED PANEL CUTOUT



MAXIMUM PANEL THICKNESS: 0.138 [3.5mm]

D

D



P.O. Box 25110
Portland, OR 97298

LAST REVISION:
SEPT. 5, 2007

UNLESS OTHERWISE SPECIFIED,
DIMENSIONS ARE IN INCHES [MILLIMETERS]
TOLERANCES ARE:

DEC .X±0.2 ANG ± 1°

.XXX±0.008 DRAWING NOT TO SCALE

DRAWN BY: CARL BUCHHEIT

DRAWING NUMBER: 53-PV5S64018.dwg

PV5S64018

8

7

6

5

4

3

2

1