

8

7

6

5

4

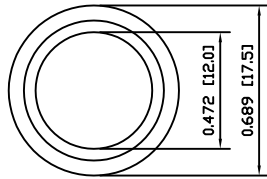
3

2

1

A

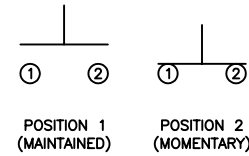
A



COLORS AND FINISH

BEZEL:
Black
ACTUATOR:
Red

SCHEMATIC



SPECIFICATIONS

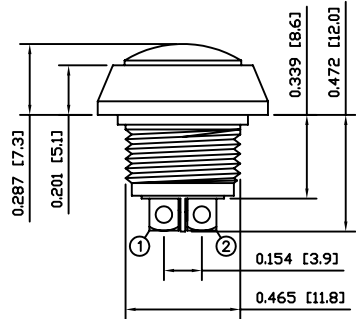
FUNCTION:
1P1T OFF-(ON)
RATING:
2A 48VDC
CONTACT RESISTANCE:
Initial: 50mΩ Max. at 1A 12VDC
INSULATION RESISTANCE:
1,000MΩ Min. at 500VDC
DIELECTRIC STRENGTH:
2,000VAC Min. for 1 Minute
ELECTRICAL LIFE:
200,000 Cycles Min.
MECHANICAL LIFE:
1,000,000 Cycles Min.
INGRESS PROTECTION:
IP65
TEMPERATURE:
Operating: -20°C to 70°C

APPROVALS:

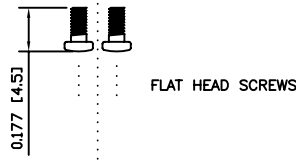
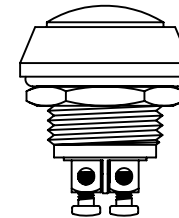
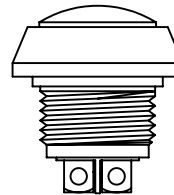
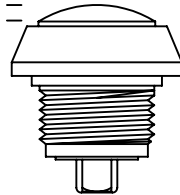
RoHS

B

B

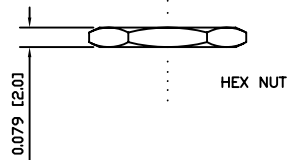
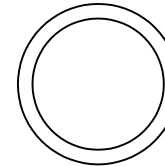


POSITION 1
POSITION 2

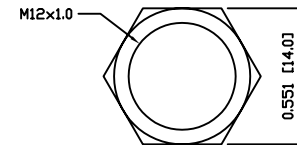


0.177 [4.5]
FLAT HEAD SCREWS

O-RING



0.079 [2.0]
HEX NUT



ASSEMBLED VIEW

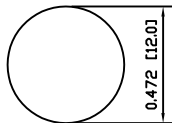
MATERIALS

BUSHING:
Aluminum
BASE:
Polybutylene Terephthalate (PBT), UL94 V-2
ACTUATOR:
Polybutylene Terephthalate (PBT), UL94 V-2
HARDWARE:
Brass (H59)
SEALING:
Silicone
INNER ASSEMBLY:
Polyamide 6/6 (PA66)
Brass (H62)
SPRING:
Stainless Steel (304)
CONTACTS:
Silver Plated Brass (H62)
TERMINALS:
Silver Plated Brass (H62)
Steel (A3)
O-RING:
Nitrile Butadiene Rubber (NBR)

C

C

SUGGESTED PANEL CUTOUT



MAXIMUM PANEL THICKNESS: 0.138 [3.5mm]

D

D

UNLESS OTHERWISE SPECIFIED,
DIMENSIONS ARE IN INCHES [MILLIMETERS]
TOLERANCES ARE:
DEC .X±0.2 ANG ± 1°
.XXX±0.008 DRAWING NOT TO SCALE
DRAWN BY: CARL BUCHHEIT

LAMB
INDUSTRIES

P.O. Box 25110
Portland, OR 97298

LAST REVISION:
SEPT. 5, 2007

DRAWING NUMBER: 53-PV5S64019.dwg

PV5S64019

8

7

6

5

4

3

2

1